

10-12530: Mouse Monoclonal Antibody to p53(Clone :BS12)(Discontinued)

Clonality :	Monoclonal
Clone Name :	BS12
Application :	IHC
Reactivity :	Human
Gene :	TP53
Gene ID :	7157
Uniprot ID :	P04637
Alternative Name :	Tumor suppressor p53, Phosphoprotein p53, Antigen NY-CO-13, TP53
Isotype :	Mouse IgG1

Description

p53 responds to diverse cellular stresses to regulate target genes that induce cell cycle arrest, apoptosis, senescence, DNA repair, or changes in metabolism. p53 protein is expressed at low level in normal cells and at a high level in a variety of transformed cell lines, where it's believed to contribute to transformation and malignancy. p53 is a DNA-binding protein containing transcription activation, DNA-binding, and oligomerization domains. It is postulated to bind to a p53-binding site and activate expression of downstream genes that inhibit growth and/or invasion, and thus function as a tumor suppressor. Mutants of p53 that frequently occur in a number of different human cancers fail to bind the consensus DNA binding site, and hence cause the loss of tumor suppressor activity. Alterations of this gene occur not only as somatic mutations in human malignancies, but also as germline mutations in some cancer-prone families with Li-Fraumeni syndrome. Multiple p53 variants due to alternative promoters and multiple alternative splicing have been found. These variants encode distinct isoforms, which can regulate p53 transcriptional activity.

Product Info

Amount :	0.1 ml / 0.5 ml
Content :	TRIS with 0.03% sodium azide, pH7.2
Storage condition :	Store at 4°C

Application Note

Immunohistochemical Analysis :-1:200

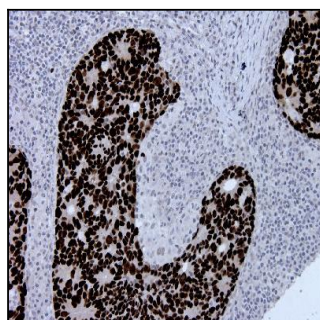


Figure-1: Colon carcinoma in lymph node Metastase section has been stained using P53 antibody (Clone: BS12) with 1:200 dilution. Carcinoma cells have strong staining reaction with nuclear staining pattern.

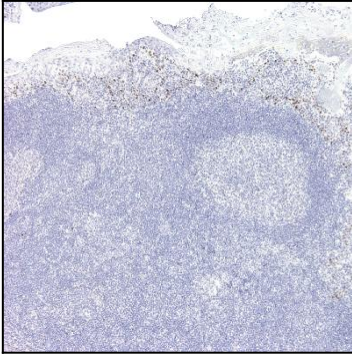


Figure-2: Tonsil section has been stained using P53 antibody (Clone: BS12) with 1:200 dilution. Scattered basal cells of epithelium have stained moderately with nuclear staining pattern.

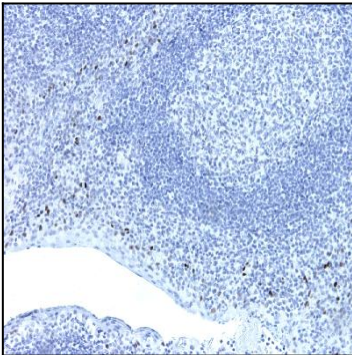


Figure-3: Tonsil section has been stained using P53 antibody (Clone: BS12) with 1:200 dilution. Scattered basal cells of epithelium have stained moderately with nuclear staining pattern.