

10-12523: Mouse Monoclonal Antibody to CK5 (CK-HMW)(Clone :BS42)(Discontinued)

Clonality :	Monoclonal
Clone Name :	BS42
Application :	IHC
Reactivity :	Human
Gene :	KRT5
Gene ID :	3852
Uniprot ID :	Å P13647
Alternative Name :	K5, CK5, CK-HMW, DDD, EBS2, KRT5A, KRT5, Keratin 5, Cytokeratin5
Isotype :	Mouse IgG1

Description

CK5 (keratin 5) is a member of the keratin gene family. Biochemically, most members of the CK family fall into one of two classes, type I (acidic polypeptides) and type II (basic polypeptides). The type II cytokeratins consist of basic or neutral proteins which are arranged in pairs of heterotypic keratin chains coexpressed during differentiation of simple and stratified epithelial tissues. This type II cytokeratin is specifically expressed in the basal layer of the epidermis with family member KRT14. The type II cytokeratins are clustered in a region of chromosome 12q12-q13. At least one member of the acidic family and one member of the basic family is expressed in all epithelial cells. Cytokeratin 5 is expressed in normal basal cells. Mutations of the Cytokeratin5 gene (KRT5) have been shown to result in the autosomal dominant disorder epidermolysis bullosa (EB). Defects in KRT5 are a cause of epidermolysis bullosa simplex.

Product Info

Amount :	0.1 ml / 0.5 ml
Content :	TRIS with 0.03% sodium azide, pH7.2
Storage condition :	Store at 4°C

Application Note

Immunohistochemical Analysis :-1:200

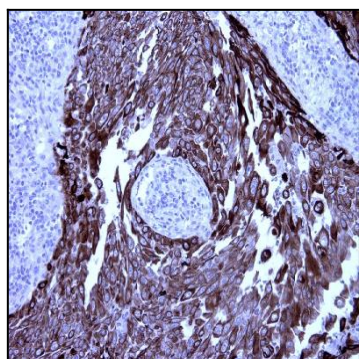


Figure-1: Lung squamous cell cancer section has been stained using CK5 antibody (Clone: BS42) with 1:200 dilution. Lung squamous cell cancer stained intensively.

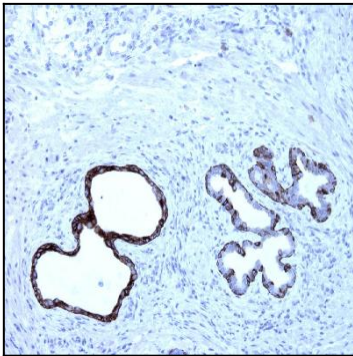


Figure-2: Lung squamous cell carcinoma section has been stained using CK5 antibody (Clone: BS42) with 1:200 dilution. Lung squamous cell carcinoma stained intensively.

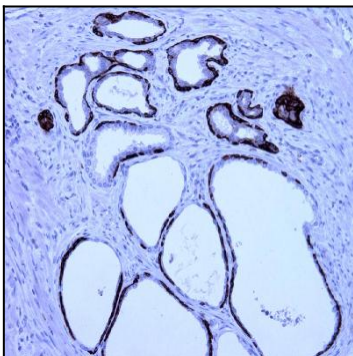


Figure-3: Esophagus section has been stained using CK5 antibody (Clone: BS42) with 1:200 dilution. All layers of squamous epithelium have strong label.

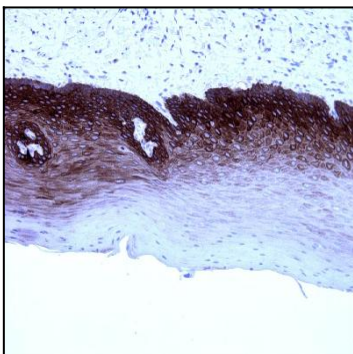


Figure-4: Prostate section has been stained using CK5 antibody (Clone: BS42) with 1:200 dilution. Prostate basal cells stained strongly.