

## 10-12520: Mouse Monoclonal Antibody to Desmin(Clone :BS21)

<b>Clonality :</b>	Monoclonal
<b>Clone Name :</b>	BS21
<b>Application :</b>	IHC
<b>Reactivity :</b>	Human
<b>Gene :</b>	DES
<b>Gene ID :</b>	1674
<b>Uniprot ID :</b>	P17661
<b>Alternative Name :</b>	Desmin, DES
<b>Isotype :</b>	Mouse IgG1

### Description

Desmin (DES), with 470-amino acid protein (about 52kDa), belongs to the intermediate filament family and Desmin is class III intermediate filaments found in muscle cells. Homopolymers of Desmin form a stable intracytoplasmic filamentous network connecting myofibrils to each other and to the plasma membrane. Mutations in Desmin are associated with desmin-related myopathy, a familial cardiac and skeletal myopathy (CSM), and with distal myopathies. Desmin is also expressed in smooth muscle cells of both airways and alveolar ducts and Desmin is a load-bearing protein that stiffens the airways and consequently the lung and modulates airway contractile response.

### Product Info

<b>Amount :</b>	0.1 ml / 0.5 ml
<b>Content :</b>	TRIS with 0.03% sodium azide, pH7.2
<b>Storage condition :</b>	Store at 4°C

### Application Note

Immunohistochemical Analysis :-1:200



Figure-1: Appendix has been stained using desmin antibody (Clone: BS21). Desmin is an intermediate filament expressed in striated muscle cells and most smooth muscle cells X125

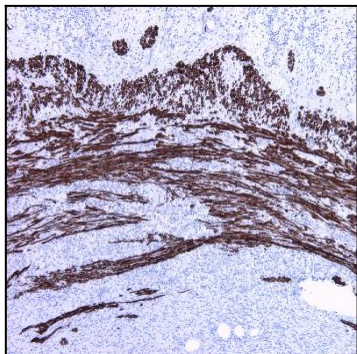


Figure-2: Appendix has been stained using desmin antibody (Clone: BS21). Desmin is an intermediate filament expressed in striated muscle cells and most smooth muscle cells X100

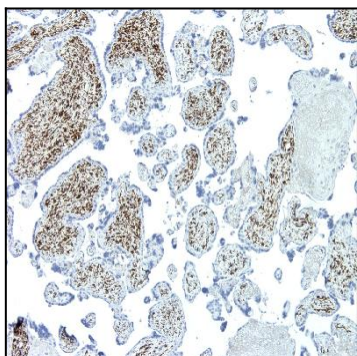


Figure-3: Placenta section has been stained using Desmin antibody (Clone: BS21) with 1:200 dilution. Smooth muscle cells have strong label.

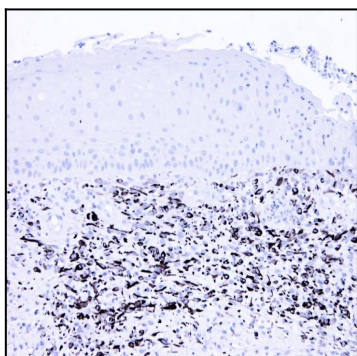


Figure-4: Rhabdomyosarcoma section has been stained using Desmin antibody (Clone: BS21) with 1:200 dilution. Neoplastic cells have strong label.