

## 10-12517: Rabbit Monoclonal Antibody to P63(Clone :BSR6)

**Clonality :** Monoclonal

**Clone Name :** BSR6

**Application :** IHC

**Reactivity :** Human

**Gene :** TP63

**Gene ID :** 8626

**Uniprot ID :** Q9H3D4

**Alternative Name :** Chronic ulcerative stomatitis protein, Keratinocyte transcription factor KET, Transformation-related protein 63, Tumor protein p73-like, p40, p51, KET, P63, P73H, P73L, TP73L

### Product Info

**Amount :** 0.1 ml / 0.5 ml

**Content :** TRIS with 0.03% sodium azide, pH7.2

**Storage condition :** Store at 4°C

### Application Note

Immunohistochemical Analysis :-1:200

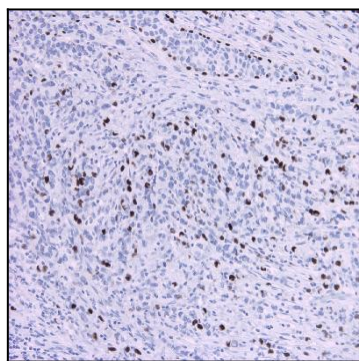


Figure-1: Breast carcinoma section has been stained using P63 antibody (Clone: BSR6) with 1:200 dilution. Scattered and strongly to moderately stained, P63 positive carcinoma cells were observed.

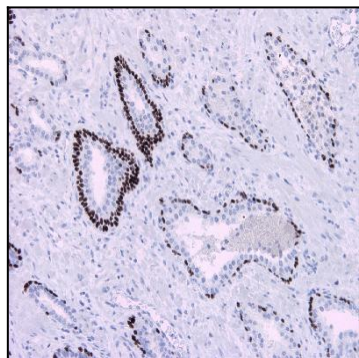


Figure-2: Prostate section has been stained using P63 antibody (Clone: BSR6) with 1:200 dilution. Normal prostate glands are P63 positive.

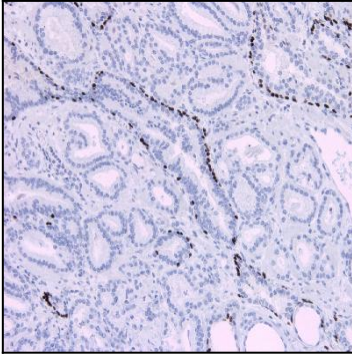


Figure-3: Prostate adenocarcinoma section has been stained using P63 antibody (Clone: BSR6) with 1:200 dilution. Prostate adenocarcinoma are P63 negative.

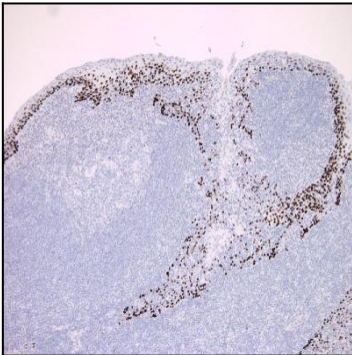


Figure-4: Tonsil section has been stained using P63 antibody (Clone: BSR6) with 1:200 dilution. Basal cells of epithelium have strongly stained with nuclear staining pattern.

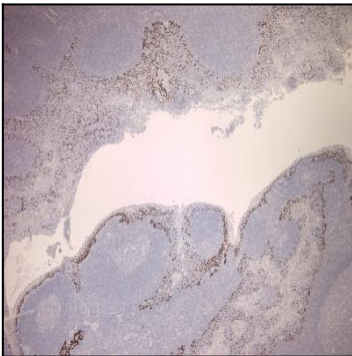


Figure-5: Tonsil section has been stained using P63 antibody (Clone: BSR6) with 1:200 dilution. Basal cells of epithelium have strongly stained with nuclear staining pattern.