

10-12515: Mouse Monoclonal Antibody to CD23(Clone :BS20)

Clonality :	Monoclonal
Clone Name :	BS20
Application :	IHC
Reactivity :	Human
Gene :	FCER2
Gene ID :	2208
Uniprot ID :	P06734
Alternative Name :	FCER2, CD23A, CLEC4J, FCE2, IGEBF

Product Info

Amount :	0.1 ml / 0.5 ml
Content :	TRIS with 0.03% sodium azide, pH7.2
Storage condition :	Store at 4°C

Application Note

Immunohistochemical Analysis :-1:200

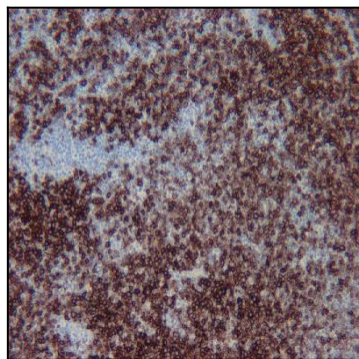


Figure-1: Tumor section of B-cell have been stained using CD23 antibody (Clone: BS20) with 1:200 dilution. Neoplastic cells have strong to moderate label.

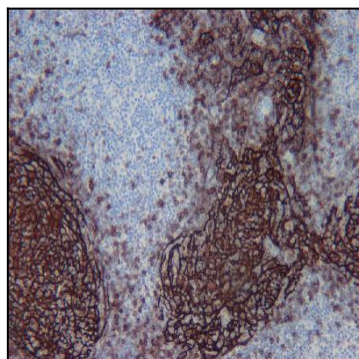


Figure-2: Follicular lymphoma section have been stained using CD23 antibody (Clone: BS20) with 1:200 dilution. Dendritic cells have strong label.

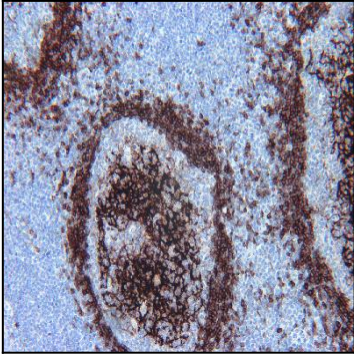


Figure-3: Tonsil section have been stained using CD23 antibody (Clone: BS20) with 1:200 dilution. B cells of mantle zone have strong or moderate membranous label and follicular dendritic cells stained strongly.