

## 10-12514: Rabbit Monoclonal Antibody to CD7(Clone :BSR9)

<b>Clonality :</b>	Monoclonal
<b>Clone Name :</b>	BSR9
<b>Application :</b>	IHC
<b>Reactivity :</b>	Human
<b>Gene :</b>	CD7
<b>Gene ID :</b>	924
<b>Uniprot ID :</b>	P09564
<b>Alternative Name :</b>	GP40, T-cell leukemia antigen, T-cell surface antigen Leu-9, TP41

### Product Info

<b>Amount :</b>	0.1 ml / 0.5 ml
<b>Content :</b>	TRIS with 0.03% sodium azide, pH7.2
<b>Storage condition :</b>	Store at 4°C

### Application Note

Immunohistochemical Analysis :-1:250

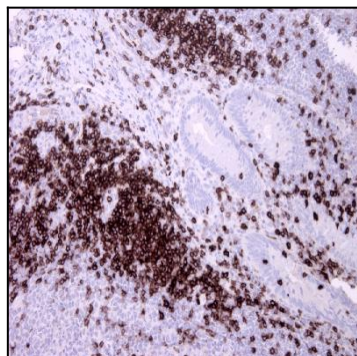


Figure-1: Appendix section has been stained using CD7 antibody (Clone: BSR9) with 1:250 dilution. CD7 positive T cells and intraepithelial T cells have strong membranous label.

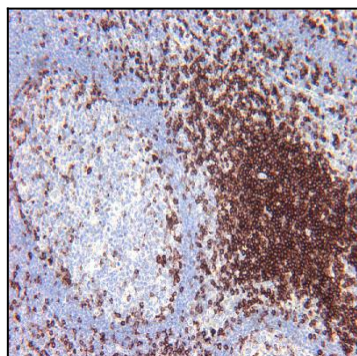


Figure-2: Tonsil section has been stained using CD7 antibody (Clone: BSR9) with 1:250 dilution. CD7 positive T cells have strong membranous label.

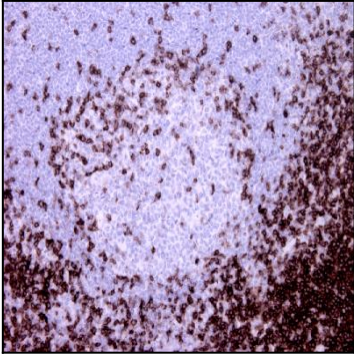


Figure-3: Tonsil section has been stained using CD7 antibody (Clone: BSR9) with 1:250 dilution. CD7 positive T cells have strong membranous label.