

10-12510: Mouse Monoclonal Antibody to Insulin (Clone :BS22)

Clonality :	Monoclonal
Clone Name :	BS22
Application :	IHC
Reactivity :	Human
Gene :	INS
Gene ID :	3630
Uniprot ID :	P01308
Alternative Name :	INS

Product Info

Amount :	0.1 ml / 0.5 ml
Content :	TRIS with 0.03% sodium azide, pH7.2
Storage condition :	Store at 4°C

Application Note

Immunohistochemical Analysis :-1:200

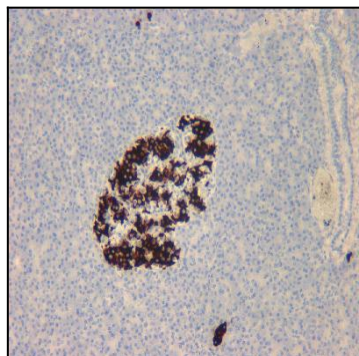


Figure-1: Pancreas section has been stained using insulin antibody (Clone: BS22) with 1:200 dilution. Insulin secreted beta cells have strong label in islets of Langerhans.

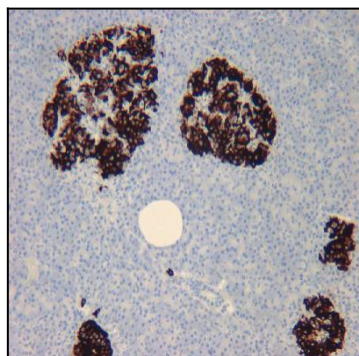


Figure-2: Pancreas section has been stained using insulin antibody (Clone: BS22) with 1:200 dilution. Insulin secreted beta cells have strong label in islets of Langerhans.

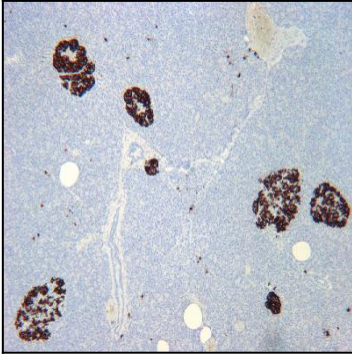


Figure-3: Pancreas section has been stained using insulin antibody (Clone: BS22) with 1:200 dilution. Insulin secreted beta cells have strong label in islets of Langerhans.