

10-12506: Mouse Monoclonal Antibody to CD23(Clone :BS99)(Discontinued)

Clonality :	Monoclonal
Clone Name :	BS99
Application :	IHC
Reactivity :	Human
Gene :	FCER2
Gene ID :	2208
Uniprot ID :	P06734
Alternative Name :	C-type lectin domain family 4 member J, Fc-epsilon-RII, Immunoglobulin E-binding factor, Lymphocyte IgE receptor

Description

The human leukocyte differentiation antigen CD23 (FCER2) is a key molecule for B-cell activation and growth. It is the low-affinity receptor for IgE. The truncated molecule can be secreted, then functioning as a potent mitogenic growth factor. It is expressed on most mature, conventional B cells (but not on peritoneal CD5+ B cells), and can also be found on the surface of T cells, macrophages, platelets and EBV transformed B lymphoblasts. Expression of CD23 has been detected in neoplastic cells from cases of B cell chronic Lymphocytic leukemia. CD23 is expressed by B cells in the follicular mantle zone but not by proliferating germinal centre cells. CD23 is also expressed by eosinophils. CD23 is distinct from the high affinity IgE receptors found on basophils and mast cells, which mediate allergic reactions. The low affinity receptors are thought to play a role in isotype specific immunoregulation. The regulation of CD23 surface expression appears to be integral with the complex IgE system, which involves interactions of cells, cytokines, antibodies and regulatory factors.

Product Info

Amount :	0.1 ml / 1 ml
Content :	TRIS with 0.03% sodium azide, pH7.2
Storage condition :	Store at 4°C

Application Note

Immunohistochemical Analysis :-1:200

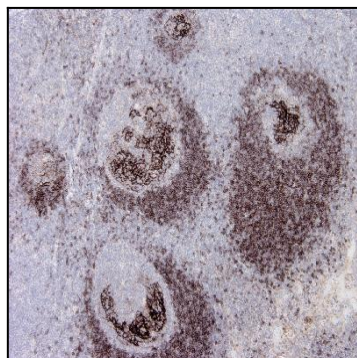


Figure-1: Tonsil (Figure-1 and Figure-2) has stained with CD23 (Clone: BS99) antibody using 1:200 dilution and pH9 tris-EDTA pretreatment. B-cells of mantle zone have strong or moderate membranous label and follicular dendritic cells stained strongly.

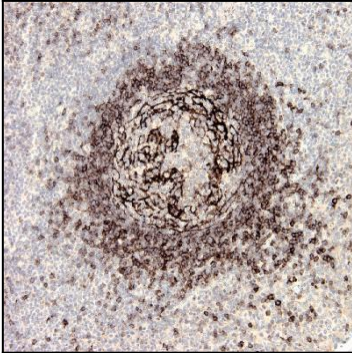


Figure-2: Tonsil (Figure-1 and Figure-2) has stained with CD23 (Clone: BS99) antibody using 1:200 dilution and pH9 tris-EDTA pretreatment. B-cells of mantle zone have strong or moderate membranous label and follicular dendritic cells stained strongly.

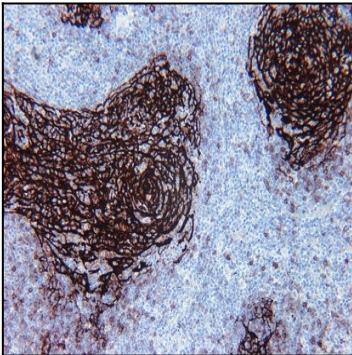


Figure-3: Follicular lymphoma section have been stained using CD23 antibody (Clone: BS99) with 1:200 dilution.