

10-12504: Mouse Monoclonal Antibody to Melan A(Clone :BS52)

Clonality :	Monoclonal
Clone Name :	BS52
Application :	IHC
Reactivity :	Human
Gene :	MLANA
Gene ID :	2315
Uniprot ID :	Q16655
Alternative Name :	Antigen LB39-AA, Antigen SK29-AA, Protein Melan-A, MART1

Product Info

Amount :	0.1 ml / 0.5 ml
Content :	TRIS with 0.03% sodium azide, pH7.2
Storage condition :	Store at 4°C

Application Note

Immunohistochemical Analysis :-1:250

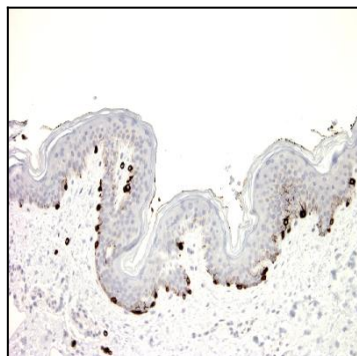


Figure-1: Normal skin and melanoma have stained with Melan A (Clone: BS52) antibody using 1:250 dilution and pH9 tris-EDTA pretreatment. Melanocytes have strong cytoplasmic label, neoplastic cells stained with strong staining intensity without background staining.

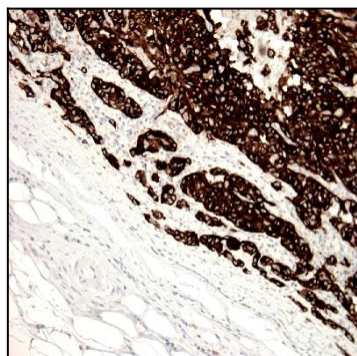


Figure-2: Normal skin and melanoma have stained with Melan A (Clone: BS52) antibody using 1:250 dilution and pH9 tris-EDTA pretreatment. Melanocytes have strong cytoplasmic label, neoplastic cells stained with strong staining intensity without background staining.

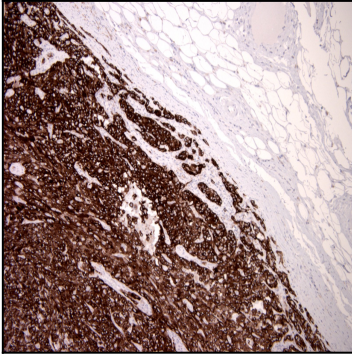


Figure-3: Melanoma section has been stained using Melan A antibody (Clone: BS52) with 1:250 dilution. Melanoma cells stained with strong staining intensity without background staining in normal cells.