

## 10-12503: Mouse Monoclonal Antibody to Napsin A(Clone :BS10)

<b>Clonality :</b>	Monoclonal
<b>Clone Name :</b>	BS10
<b>Application :</b>	IHC
<b>Reactivity :</b>	Human
<b>Gene :</b>	NAPSA
<b>Gene ID :</b>	9476
<b>Uniprot ID :</b>	O96011
<b>Alternative Name :</b>	NAPSA, NAP1, NAPA

### Product Info

<b>Amount :</b>	0.1 ml / 0.5 ml
<b>Content :</b>	TRIS with 0.03% sodium azide, pH7.2
<b>Storage condition :</b>	Store at 4°C

### Application Note

Immunohistochemical Analysis :-1:300

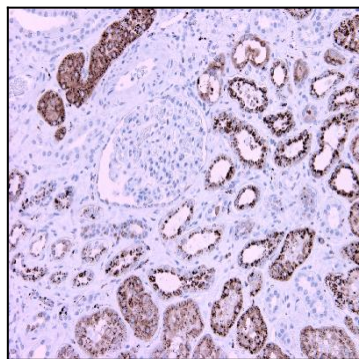


Figure-1: Immunohistochemical analysis of Napsin A (Clone: BS10) antibody on normal kidney using 1:300 dilution with pH9 tris-EDTA pretreatment.

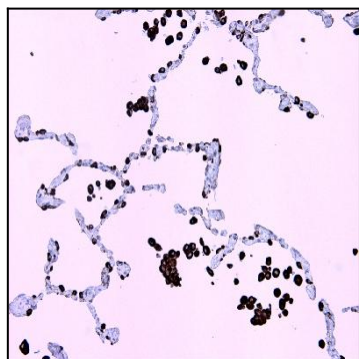


Figure-2: Immunohistochemical analysis of Napsin A (Clone: BS10) antibody on normal lung using 1:300 dilution with pH9 tris-EDTA pretreatment.

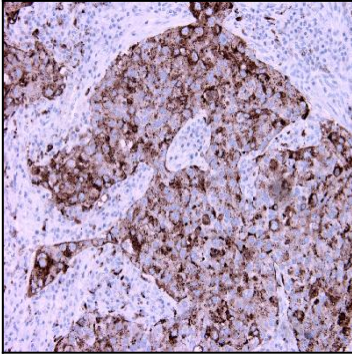


Figure-3: Immunohistochemical analysis of Napsin A (Clone: BS10) antibody on lung carcinomas using 1:300 dilution with pH9 tris-EDTA pretreatment.

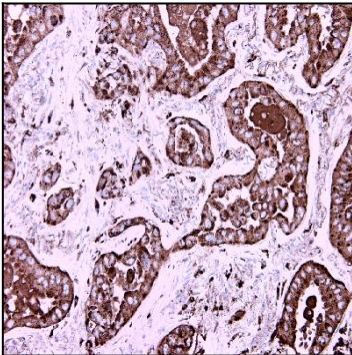


Figure-4: Immunohistochemical analysis of Napsin A (Clone: BS10) antibody on lung carcinomas using 1:300 dilution with pH9 tris-EDTA pretreatment.