

10-12502: Mouse Monoclonal Antibody to Bcl2(Clone :BS94)

Clonality : Monoclonal
Clone Name : BS94
Application : IHC
Reactivity : Human
Gene : BCL2
Gene ID : 596
Uniprot ID : P10415

Product Info

Amount : 0.1 ml / 0.5 ml
Content : TRIS with 0.03% sodium azide, pH7.2
Storage condition : Store at 4°C

Application Note

Immunohistochemical Analysis :-1:200

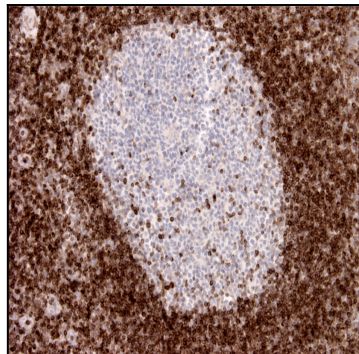


Figure-1: Tonsil (Figure-1) and lymph node sections (Figure-2, figure-3) have been stained using BCL2 antibody (Clone: BS94) with 1:200 dilution. All peripheral lymphocytes should be labelled and the germinal center should be negatively stained from tonsil sections. Only the few scattered T-cells should be stained (Figure-2, figure-3). Mantle cell lymphoma stained strongly with membranous staining pattern.

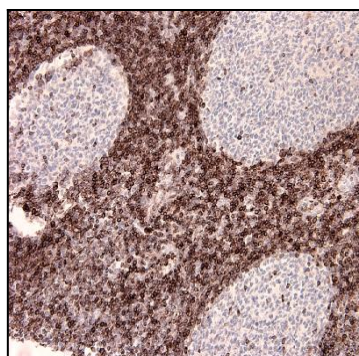


Figure-2: Tonsil (Figure-1) and lymph node sections (Figure-2, figure-3) have been stained using BCL2 antibody (Clone: BS94) with 1:200 dilution. All peripheral lymphocytes should be labelled and the germinal center should be negatively stained from tonsil sections. Only the few scattered T-cells should be stained (Figure-2, figure-3). Mantle cell lymphoma stained strongly with membranous staining pattern.

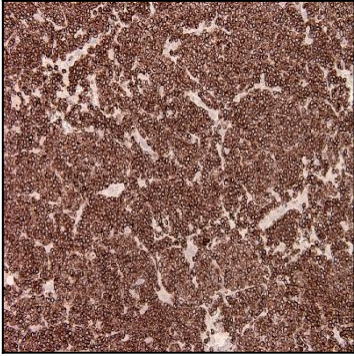


Figure-3: Tonsil (Figure-1) and lymph node sections (Figure-2, figure-3) have been stained using BCL2 antibody (Clone: BS94) with 1:200 dilution. All peripheral lymphocytes should be labelled and the germinal center should be negatively stained from tonsil sections. Only the few scattered T-cells should be stained (Figure-2, figure-3). Mantle cell lymphoma stained strongly with membranous staining pattern.