

## 10-12501: Mouse Monoclonal Antibody to CK20(Clone :BS101)

<b>Clonality :</b>	Monoclonal
<b>Clone Name :</b>	BS101
<b>Application :</b>	IHC
<b>Reactivity :</b>	Human
<b>Gene :</b>	KRT20
<b>Gene ID :</b>	54474
<b>Uniprot ID :</b>	P35900
<b>Alternative Name :</b>	KRT20, Cytokeratin-20, Cytokeratin 20, CK20, K20, Keratin 20, Keratin-20, KRT21, CK-20, Protein IT

### Product Info

<b>Amount :</b>	0.1 ml / 0.5 ml
<b>Content :</b>	TRIS with 0.03% sodium azide, pH7.2
<b>Storage condition :</b>	Store at 4°C

### Application Note

Immunohistochemical Analysis :-1:250

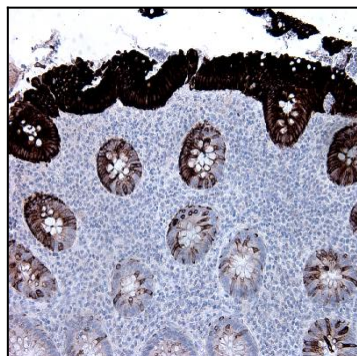


Figure-1: Human appendix has been stained using CK20 antibody (Clone: BS101) with 1:250 dilution.

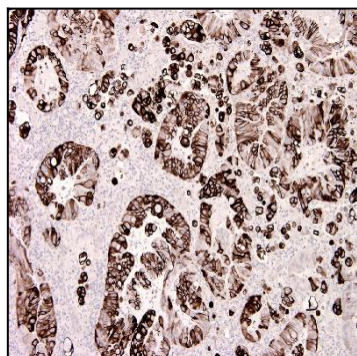


Figure-2: Urinary bladder carcinoma section has been stained using CK20 antibody (Clone: BS101) with 1:250 dilution. Urinary bladder carcinoma cells have strong and intensive signal.



Figure-3: Lymph node section with metastasis of colon carcinoma has been stained using CK20 antibody (Clone: BS101) with 1:250 dilution. Neoplastic cells have moderate to strong CK20 positivity.