

11-8103: Polyclonal Antibody to SENP1

Clonality :	Polyclonal
Application :	WB
Reactivity :	Human
Gene :	SENP1
Gene ID :	29843
Uniprot ID :	Q9P0U3
Format :	Purified
Alternative Name :	Sentrin/SUMO-specific protease SENP1
Isotype :	Rabbit IgG
Immunogen Information :	A partial length recombinant SENP1 protein (amino acids 380-610) was used as the immunogen for this antibody.

Product Info

Amount :	25 µg / 100 µg
Purification :	Protein A Chromatography
Content :	25 µg in 50 µl/100 µg in 200 µl PBS containing 0.05% BSA and 0.05% sodium azide. Sodium azide is highly toxic.
Storage condition :	Store the antibody at 4°C, stable for 6 months. For long-term storage, store at -20°C. Avoid repeated freeze and thaw cycles.

Application Note

Western blot analysis: 2-4 µg/ml

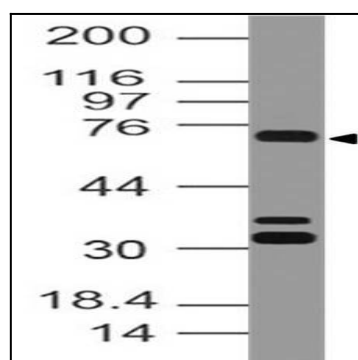


Figure-1: Western blot analysis of Human SENP1. Anti- Human SENP1 antibody (11-8103) was used at 2 µg/ml on h Testis lysate.