

## 10-11568: Rabbit Polyclonal Antibody to Myeloperoxidase(Discontinued)

<b>Clonality :</b>	Polyclonal
<b>Application :</b>	IHC
<b>Reactivity :</b>	Human
<b>Gene :</b>	MPO
<b>Gene ID :</b>	4353
<b>Uniprot ID :</b>	P05164
<b>Format :</b>	Purified
<b>Alternative Name :</b>	Myeloperoxidase , MPO
<b>Isotype :</b>	Rabbit IgG
<b>Immunogen Information :</b>	Myeloperoxidase isolated from human granulocytes.

### Description

This antibody reacts with human myeloperoxidase. It stains granules of neutrophils, granulocytes in spleen, bone marrow, tonsil and blood smears.

### Product Info

<b>Amount :</b>	0.5 ml
<b>Content :</b>	Purified immunoglobulin fraction of rabbit antiserum against human myeloperoxidase containing sodium azide as preservative.
<b>Storage condition :</b>	Store at 2-8°C.

### Application Note

IHC : 1:25-1:100

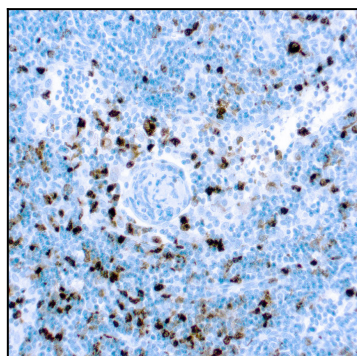


Figure 1 : Formalin fixed paraffin embedded B-Cell Lymphoma stained with Myeloperoxidase antibody ( 10-11568).