

10-11544: Rabbit Polyclonal Antibody to Caspase 3(Discontinued)

Clonality :	Polyclonal
Application :	IHC
Reactivity :	Dog
Gene :	Casp3
Gene ID :	836
Uniprot ID :	P42574
Format :	Purified
Alternative Name :	Apopain, Cysteine protease CPP32, Protein Yama, SREBP cleavage activity 1, CPP32
Isotype :	Rabbit IgG
Immunogen Information :	Recombinant full-length human caspase 3 protein.

Description

This antibody reacts with the active form of caspase 3 (17 kD protein). Caspase 3 is a member of the interleukin-1 beta-converting enzyme family and is thought to be associated with the induction of apoptosis. Caspase 3 is synthesized as an inactive 32 kD proenzyme and is processed during apoptosis generating two subunits of 17 kD and 12 kD. Caspase 3 stains the epithelial cells of skin, renal proximal tubules, and collecting ducts.

Product Info

Amount :	0.5 ml
Content :	Purified immunoglobulin fraction of rabbit antiserum against Caspase-3 containing sodium azide as preservative.
Storage condition :	Store at 2-8°C.

Application Note

IHC : 1:50-1:100

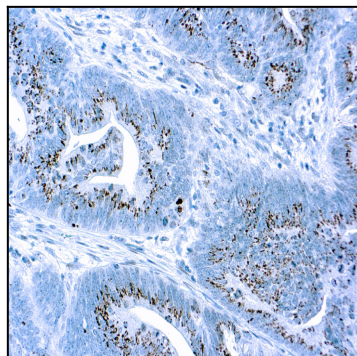


Figure 1 : Formalin fixed paraffin embedded human tonsil stained with Caspase 3 antibody (10-11544).