

10-11540: Mouse Monoclonal Antibody to CD30(Clone: Ber-H2)(Discontinued)

Clonality :	Monoclonal
Clone Name :	Ber-H2
Application :	IHC
Reactivity :	Human
Gene :	TNFRSF8
Gene ID :	943
Uniprot ID :	P28908
Format :	T.C. Sup.
Alternative Name :	CD30L receptor, Ki-1 antigen, Lymphocyte activation antigen CD30, CD30, D1S166E
Isotype :	Mouse IgG1, Kappa
Immunogen Information :	Co cell line established from a patient with Hodgkin's disease of T-cell lineage.

Description

This antibody recognizes a single chain glycoprotein of 105/120kDa, identified as CD30/Ki-1. Its epitope is located between aa112-412. CD30 is synthesized as a 90kDa precursor, which is processed in the Golgi complex into a membrane-bound phosphorylated mature 105/120kDa glycoprotein. In Hodgkin's disease, CD30/Ki-1 antigen is expressed by mononuclear-Hodgkin and multinucleated Reed-Sternberg cells. It is also expressed by the tumor cells of a majority of anaplastic large cell lymphomas derived from activated lymphoid cells from histiocytic malignancies and lymphomas derived from resting and precursor lymphoid cells or from anaplastic carcinomas. About one third of the Ki-1 positive lymphomas lack the leukocyte common antigen (CD45).

Product Info

Amount :	0.5 ml
Content :	This antibody is supplied as tissue culture supernatant containing sodium azide as preservative.
Storage condition :	Store at 2-8°C.

Application Note

IHC : 1:50-1:100

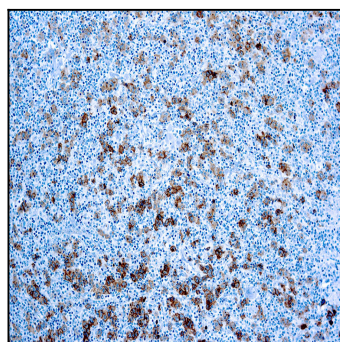


Figure 1 : Formalin fixed paraffin embedded Hodgkin's lymphoma with CD30/Ki-1 antibody (10-11540).