

10-11536: Rabbit Polyclonal Antibody to Somatostatin Receptor(Discontinued)

| | |
|--------------------------------|--|
| Clonality : | Polyclonal |
| Application : | IHC |
| Reactivity : | Human |
| Format : | Purified |
| Isotype : | Rabbit IgG |
| Immunogen Information : | A synthetic peptide derived from the C-terminus of rat somatostatin protein. |

Description

This antibody reacts with a 60 kDa protein, known as somatostatin receptor. Somatostatin family of receptors has five members, sst1-sst5, as well as two isoforms of somatostatin receptor 2, sst2A and sst2B. They are coupled to G protein and are involved in regulation of numerous processes including secretion of insulin, glucagons and growth hormone and excitation of neurons in central and peripheral nervous system.

Product Info

| | |
|----------------------------|---|
| Amount : | 0.5 ml |
| Content : | Purified immunoglobulin fraction of rabbit antiserum against human somatostatin receptor containing sodium azide as preservative. |
| Storage condition : | Store at 2-8°C. |

Application Note

IHC : 1:50-1:75

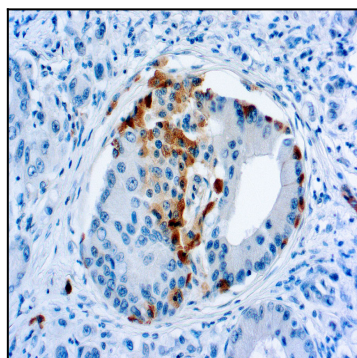


Figure 1 : Formalin fixed paraffin embedded human pancreas stained with Somatostatin Receptor antibody (10-11536).