

## 10-11532: Mouse Monoclonal Antibody to CA 15-3(Discontinued)

<b>Clonality :</b>	Monoclonal
<b>Clone Name :</b>	DBMM1
<b>Application :</b>	IHC
<b>Reactivity :</b>	Human
<b>Format :</b>	T.C. Sup.
<b>Isotype :</b>	Mouse IgG1, Kappa
<b>Immunogen Information :</b>	Human breast cancer cell line ZR-75-1

### Description

This antibody is specific to epithelial membrane antigen (EMA), CA 15-3, or polymorphic epithelial mucin. This antibody stains an underglycosylated MUC1 often present on carcinoma cells.

### Product Info

<b>Amount :</b>	0.5 ml
<b>Content :</b>	This antibody is supplied as tissue culture supernatant containing sodium azide as preservative.
<b>Storage condition :</b>	Store at 2-8°C.

### Application Note

IHC : 1:10-1:20

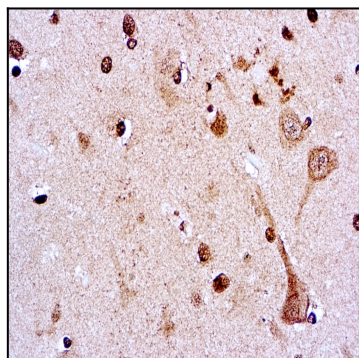


Figure 1 : Formalin fixed paraffin embedded human Breast carcinoma stained with CA 15-3 antibody ( 10-11532).