

10-11531: Mouse Monoclonal Antibody to Myosin(Clone: MY32)(Discontinued)

| | |
|--------------------------------|-----------------------|
| Clonality : | Monoclonal |
| Clone Name : | MY32 |
| Application : | IHC |
| Reactivity : | Bovine |
| Format : | Ascites |
| Isotype : | Mouse IgG1 |
| Immunogen Information : | Rabbit muscle myosin. |

Description

This antibody recognizes heavy chain of human skeletal myosin. It does not stain cardiac or smooth muscle myosin. This antibody stains the fast twitch (type II) isomyosin molecule.

Product Info

| | |
|----------------------------|---|
| Amount : | 0.5 ml |
| Content : | This antibody is supplied as diluted ascites containing sodium azide as preservative. |
| Storage condition : | Store at 2-8°C. |

Application Note

IHC : 1:25-1:50

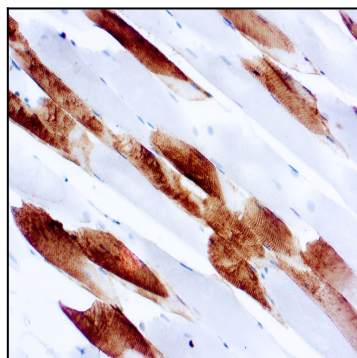


Figure 1 : Formalin fixed paraffin embedded human skeletal muscle stained with Myosin antibody (10-11531).