

## 10-11530: Mouse Monoclonal Antibody to HEP PAR 1(Clone: OCH1E5)(Discontinued)

<b>Clonality :</b>	Monoclonal
<b>Clone Name :</b>	OCH1E5
<b>Application :</b>	IHC
<b>Reactivity :</b>	Human
<b>Format :</b>	T.C. Sup.
<b>Isotype :</b>	Mouse IgG1
<b>Immunogen Information :</b>	Human liver fixed in formalin.

### Description

Hepatoblastoma is the most common primary tumor of the liver in children. The use of specific hepatocyte markers and also of fetoprotein or carcinoembryonic antigen are useful for the identification of normal and malignant fetal hepatocytes. This antibody recognizes an uncharacterized antigen present in both adults and fetal normal hepatocytes to produce a distinct granular cytoplasmic staining. This antibody stains majority of hepatocellular carcinomas.

### Product Info

<b>Amount :</b>	0.5 ml
<b>Content :</b>	This antibody is supplied as tissue culture supernatant containing sodium azide as preservative.
<b>Storage condition :</b>	Store at 2-8°C.

### Application Note

IHC : 1:50-1:200

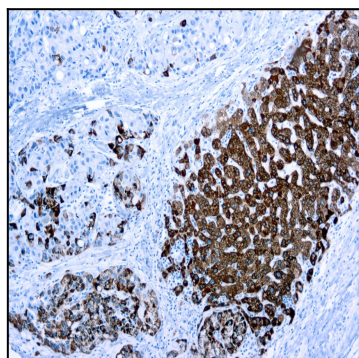


Figure 1 : Formalin fixed paraffin embedded liver stained with Hepatocyte Specific Antigen antibody ( 10-11530).