

10-11523: Mouse Monoclonal Antibody to Cyclin E(Clone: HE12)(Discontinued)

Clonality :	Monoclonal
Clone Name :	HE12
Application :	IHC
Reactivity :	Human
Gene :	CCNE1
Gene ID :	898
Uniprot ID :	P24864
Format :	Purified
Alternative Name :	G1/S-specific cyclin-E1, CCNE
Isotype :	Mouse IgG1
Immunogen Information :	Synthetic peptide corresponding to human cyclin E protein.

Description

This antibody recognizes a doublet of 50 kDa and a single band of 42 kDa identified as cyclin E. Cyclin proteins are a family of related proteins, which control the progression of the eukaryotic cell cycle. Overexpression of cyclin E shortens the length of the G1 phase, accelerating progression of S phase. The activity of cyclin E is mediated through its activation of cyclin dependent kinase 2 (cdk2) protein and is modulated by the presence of tumor suppressor proteins such as p16.

Product Info

Amount :	0.5 ml
Content :	This antibody is supplied as purified immunoglobulin fraction containing sodium azide as preservative.
Storage condition :	Store at 2-8°C.

Application Note

IHC : 1:100-1:200

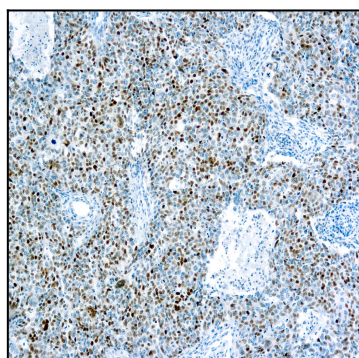


Figure 1 : Formalin fixed paraffin embedded human breast carcinoma stained with Cyclin E antibody (10-11523).