

## 10-11520: Mouse Monoclonal Antibody to ACTH(Clone: AH26)(Discontinued)

<b>Clonality :</b>	Monoclonal
<b>Clone Name :</b>	AH26
<b>Application :</b>	IHC
<b>Reactivity :</b>	Human
<b>Gene :</b>	POMC
<b>Gene ID :</b>	5443
<b>Uniprot ID :</b>	P01189
<b>Format :</b>	Purified
<b>Alternative Name :</b>	Pro-opiomelanocortin, Corticotropin-lipotropin, NPP, Melanotropin gamma, Gamma-MSH, Potential peptide, Corticotropin, Adrenocorticotrophic hormone, Alpha-MSH, Corticotropin-like intermediary peptide, CLIP, Beta-LPH, Beta-MSH
<b>Isotype :</b>	Mouse IgG1
<b>Immunogen Information :</b>	BALB/C mice were injected with a synthetic peptide corresponding to amino acids 1-24 from the N-terminal of human ACTH.

### Description

This antibody is specific to an epitope on the N-terminus of ACTH. This antibody stains corticotrophs in the adenohypophysis and is useful in the classification of pituitary adenomas.

### Product Info

<b>Amount :</b>	0.5 ml
<b>Content :</b>	This antibody is supplied as purified immunoglobulin containing sodium azide as preservative.
<b>Storage condition :</b>	Store at 2-8°C.

### Application Note

IHC : 1:50-1:100

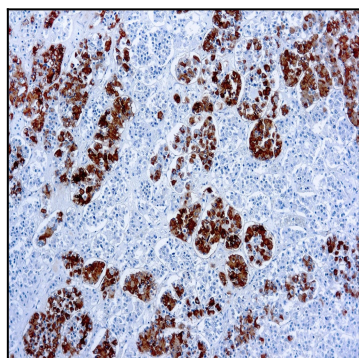


Figure 1 : Formalin fixed paraffin embedded human pituitary stained with ACTH antibody ( 10-11520).