

## 10-11519: Mouse Monoclonal Antibody to Insulin(Clone: K36ac10)(Discontinued)

<b>Clonality :</b>	Monoclonal
<b>Clone Name :</b>	K36ac10
<b>Application :</b>	IHC
<b>Reactivity :</b>	Bovine
<b>Gene :</b>	INS
<b>Gene ID :</b>	397415
<b>Uniprot ID :</b>	P01315
<b>Format :</b>	Ascites
<b>Alternative Name :</b>	Insulin B chain, Insulin A chain, Insulin
<b>Isotype :</b>	Mouse IgG1
<b>Immunogen Information :</b>	Human insulin.

### Description

This antibody recognizes purified insulin from the pancreas of human, as well as proinsulin from human.

### Product Info

<b>Amount :</b>	0.5 ml
<b>Content :</b>	This antibody is supplied as ascites fluid containing sodium azide as preservative.
<b>Storage condition :</b>	Store at 2-8°C.

### Application Note

IHC : 1:25-1:50

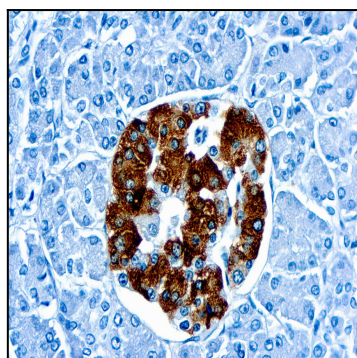


Figure 1 : Formalin fixed paraffin embedded human pancreas stained with Insulin antibody ( 10-11519).