

10-11514: Mouse Monoclonal Antibody to Cytokeratin AE1/AE3(Clone: AE1+AE3)(Discontinued)

Clonality :	Monoclonal
Clone Name :	AE1+AE3
Application :	IHC
Reactivity :	Human
Gene :	KRT1
Gene ID :	3848
Uniprot ID :	P04264
Format :	Purified
Alternative Name :	67 kDa cytokeratin, Cytokeratin-1, Hair alpha protein, Keratin-1, K1, Type-II keratin Kb1, KRTA
Isotype :	Mouse IgG1, Kappa
Immunogen Information :	Human epidermal keratin

Description

AE1/AE3 is a broad spectrum anti pan-keratin antibody cocktail, which differentiates epithelial tumors from non-epithelial tumors e.g. squamous vs. adenocarcinoma of the lung, liver carcinoma, breast cancer, and esophageal cancer.

Product Info

Amount :	0.5 ml
Content :	This antibody is supplied as purified IgG and contains sodium azide as preservative.
Storage condition :	Store at 2-8°C.

Application Note

IHC : 1:50-1:100

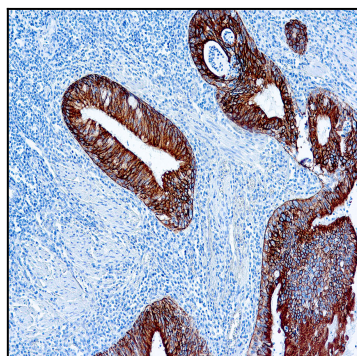


Figure 1 : Formalin fixed paraffin embedded Squamous lung carcinoma stained with Cytokeratin AE1/AE3 antibody (10-11514).