

## 10-11509: Mouse Monoclonal Antibody to HLA-DR, DP, DQ & DR(Clone: CR3/43)(Discontinued)

<b>Clonality :</b>	Monoclonal
<b>Clone Name :</b>	CR3/43
<b>Application :</b>	IHC
<b>Reactivity :</b>	Human
<b>Gene :</b>	HLA-DPB1, HLA-DQB1, HLA-DRB1
<b>Gene ID :</b>	3115, 3119, 3123
<b>Uniprot ID :</b>	P04440, P01920, P01911
<b>Format :</b>	T.C. Sup.
<b>Alternative Name :</b>	HLA class II histocompatibility antigen, DP(W4) beta chain, MHC class II antigen DPB1, HLA-DP1B, MHC class II antigen DQB1, HLA-DQB, DW2.2/DR2.2, MHC class II antigen DRB1*15, HLA-DRB2
<b>Isotype :</b>	Mouse IgG1, Kappa
<b>Immunogen Information :</b>	Tonsil cells

### Description

This antibody reacts with the beta chain of all products of the gene sub regions DP, DQ, and DR. It stains B cells, interdigitating reticulum cells, Langerhans cells and many macrophages. This antibody does not react with normal T cell and polymorphs but stains activated T cells.

### Product Info

<b>Amount :</b>	0.5 ml
<b>Content :</b>	This product is supplied as a tissue culture supernatant and contains sodium azide as a preservative.
<b>Storage condition :</b>	Store at 2-8°C.

### Application Note

IHC : 1:25-1:50

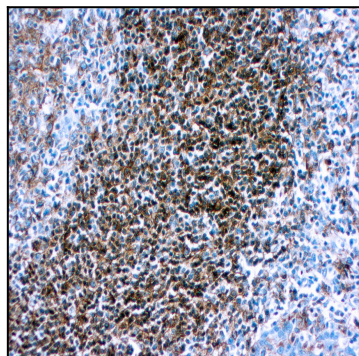


Figure 1 : Formalin fixed paraffin embedded human tonsil stained with HLA-DR antibody ( 10-11509).