

10-11508: Mouse Monoclonal Antibody to Cytomegalovirus(Clone: DDG9 + CCH2)(Discontinued)

Clonality :	Monoclonal
Clone Name :	DDG9 + CCH2
Application :	IHC
Reactivity :	Human
Format :	T.C. Sup.
Isotype :	DDG9, Mouse IgG2a, Kappa; CCH2, Mouse IgG1, Kappa
Immunogen Information :	BALB/C mice were immunized with cytomegalovirus infected cell lysate.

Description

This cocktail antibody stains infected cells giving a nuclear staining pattern with an immediate early and an early CMV antigen.

Product Info

Amount :	0.5 ml
Content :	This product is supplied as a tissue culture supernatant and contains sodium azide as a preservative.
Storage condition :	Store at 2-8°C.

Application Note

IHC : 1:10-1:25

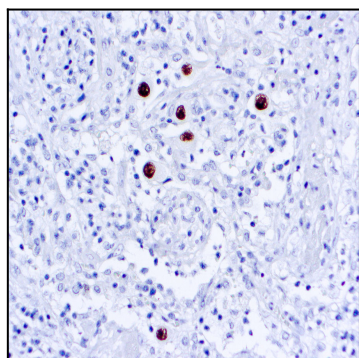


Figure 1 : Formalin fixed paraffin embedded tissue stained with CMV antibody (10-11508).