

10-11502: Mouse Monoclonal Antibody to CD20(Clone: L26)(Discontinued)

Clonality :	Monoclonal
Clone Name :	L26
Application :	IHC
Reactivity :	Human
Gene :	MS4A1
Gene ID :	931
Uniprot ID :	P11836
Format :	Purified
Alternative Name :	B-lymphocyte surface antigen B1, Bp35, Leukocyte surface antigen Leu-16, Membrane-spanning 4-domains subfamily A member 1, CD20
Isotype :	Mouse IgG2a, Kappa
Immunogen Information :	BALB/C mice were injected with human tonsil B cells.

Description

This antibody is specific to a 33 kDa polypeptide present on the majority of B cells in peripheral blood and lymphoid tissue. No reactivity with other hematopoietic cells has been observed.

Product Info

Amount :	0.5 ml
Content :	This product is supplied as a purified immunoglobulin and contains sodium azide as a preservative.
Storage condition :	Store at 2-8°C.

Application Note

IHC : 1:50-1:100

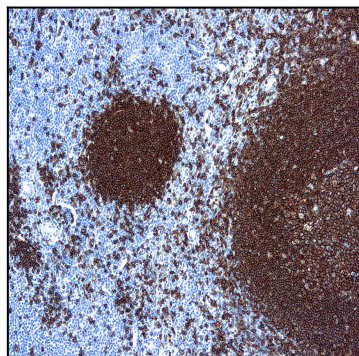


Figure 1 : Formalin fixed paraffin embedded human tonsil stained with CD20, B cell antibody (10-11502).