

10-11501: Mouse Monoclonal Antibody to Cadherin, Pan(Clone: CH-19)(Discontinued)

Clonality :	Monoclonal
Clone Name :	CH-19
Application :	IHC
Reactivity :	Human
Gene :	CDH2
Gene ID :	1000
Uniprot ID :	P19022
Format :	Ascites
Alternative Name :	CDw325, Neural cadherin, CD325, CDHN, NCAD
Isotype :	Mouse IgG1
Immunogen Information :	Synthetic peptide corresponding to the C-terminal amino acids of chicken N-cadherin with extra N-terminal lysine residue.

Description

This antibody reacts with pan cadherin with a distinct 135 kDa band from a wide variety of tissues. Cadherins are members of a multigene family of single chain glycoprotein receptors mediating Ca²⁺ dependent cell-cell adhesion.

Product Info

Amount :	0.5 ml
Content :	This antibody is supplied as diluted ascites containing sodium azide as preservative.
Storage condition :	Store at 2-8°C.

Application Note

IHC : 1:25-1:50

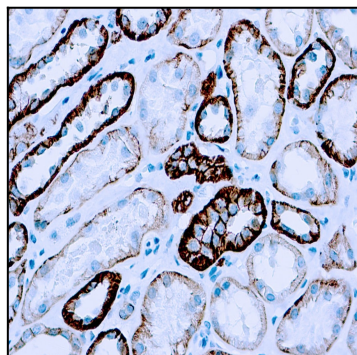


Figure 1 : Formalin fixed paraffin embedded human tonsil stained with Cadherin, Pan antibody (10-11501).