

## 10-3503: Monoclonal Antibody to mouse MD-1 (Clone : MD113)(Discontinued)

**Clonality :** Monoclonal  
**Clone Name :** MD113  
**Application :** FACS  
**Reactivity :** Mouse  
**Gene :** Ly86  
**Gene ID :** 17084  
**Uniprot ID :** O88188  
**Format :** Purified  
**Isotype :** Rat IgG2b

### Description

The monoclonal antibody 10-3503 reacts with mouse MD-1. MD-1 (22-25 kD) is an extracellular protein associated with the extracellular domain of RP105. The latter is a type 1 transmembrane protein with leucine-rich repeats. RP105 is similar to Drosophila Toll. MD-1 associated with RP105 (similar to TLR4/MD-2) appears to be an essential molecule that helps RP105 on B-cells to signal to LPS. The MD113 antibody is antagonistic in LPS-induced B-cell proliferation and B7.2 up-regulation.

### Product Info

**Amount :** 1 (Clone : MD113)(Discontinued) / 500 µg  
**Content :** 0.5 mg, 0.2 µm filtered antibody solution in PBS, containing 0.1% bovine serum albumin and 0.02% sodium azide.  
**Storage condition :** Product should be stored at 4 °C. Under recommended storage conditions, product is stable for one year.

### Application Note

The monoclonal antibody MD113 can be used for flow cytometry and functional studies. The monoclonal antibody cannot be used for Western blot and immunoprecipitation.

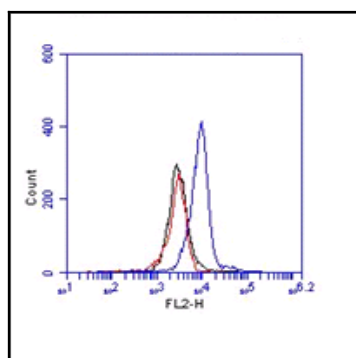


Figure-1: Flow analysis of mouse MD-1 antibody (Clone: MD113): Cell surface staining of Raw cells, blue represents mouse MD-1, red represents Isotope control Rat IgG2b. 1:50 dilution of antibody was used. Goat Anti-Rat PE was used as secondary antibody.