

10-3005-F: Monoclonal Antibody to TLR8/CD288 FITC Conjugated (Clone: ABM15F6)

Clonality :	Monoclonal
Clone Name :	ABM15F6
Application :	FACS
Reactivity :	Human
Conjugate :	FITC
Gene :	TLR8
Gene ID :	51311
Uniprot ID :	Q9NR97
Format :	Purified
Alternative Name :	TLR8,UNQ249/PRO286
Isotype :	Mouse IgG1 Kappa
Immunogen Information :	A partial length recombinant TLR8 protein (amino acids 750-900) was used as the immunogen for this antibody.

Description

Toll like receptor 8, also known as CD288, is a member of TLR family. It plays an important role in sensing phagocytosed pathogen. TLR8 recognizes ssRNA and recruits MyD88 and leads to the activation of transcription factor NF-kappa B. TLR8 has two splice variants, viz., TLR8v1 and TLR8v2 and one missense variant, termed G or A1G allele of TLR8. TLR8v1 has additional 19 amino acids in the N-terminus. It is predominantly expressed in lung and peripheral blood leukocytes.

Product Info

Amount :	25 µg / 100 µg
Purification :	Protein G Chromatography
Content :	0.2 mg/ml in Tris buffer containing 0.05% Azide
Storage condition :	Store the antibody at 4°C, stable for 6 months.

Application Note

FACS analysis: 0.5-1 µg/10⁶ cells

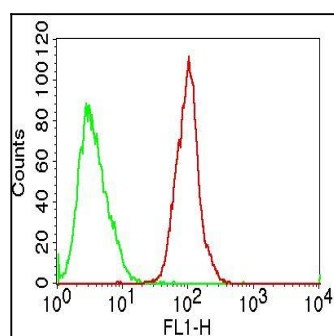


Fig-1: Intracellular flow analysis of FITC conjugated hTLR8 in Jurkat cells using 0.5 µg/10⁶ cells of FITC conjugated hTLR8 antibody (Clone: ABM15F6). Green represents isotype control; red represents anti-FITC conjugated hTLR8 antibody.

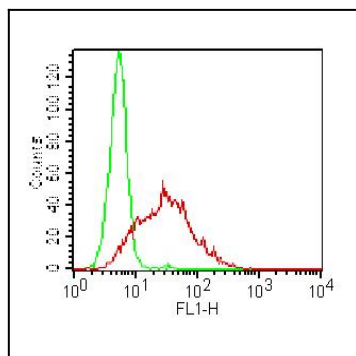


Fig-2: Intracellular flow analysis of FITC conjugated hTLR8 in PBMC using 0.5 $\mu\text{g}/10^6$ cells of FITC conjugated hTLR8 antibody (Clone: ABM15F6). Green represents isotype control; red represents FITC conjugated anti- hTLR8 antibody.