

10-2001-F: Recombinant Human PD-1 rabbit monoclonal Antibody (Clone: ABMRR01) FITC Conjugated

| | |
|---------------------------|-------------------|
| Clonality : | Monoclonal |
| Clone Name : | ABMRR01 |
| Application : | FACS |
| Reactivity : | Human |
| Conjugate : | FITC |
| Gene : | PDCD1 |
| Gene ID : | 5133 |
| Uniprot ID : | Q15116 |
| Format : | Purified |
| Alternative Name : | PDCD1, PD1, CD279 |
| Isotype : | Rabbit IgG |

Description

PDCD-1 (programmed cell death-1 protein), also designated CD279, is a type I transmembrane receptor and a member of the immunoglobulin gene superfamily. It is expressed on activated T-cells, B-cells, and myeloid cells. Anti-PDCD-1 is a marker of angioimmunoblastic lymphoma and suggests a unique cell of origin for this neoplasm. Unlike CD10 and BCL6, PDCD-1 is expressed by few B-cells, so anti-PDCD-1 may be a more specific and useful diagnostic marker in angioimmunoblastic lymphoma. In addition, PDCD-1 expression provides evidence that angioimmunoblastic lymphoma is a neoplasm derived from germinal center-associated T-cells.

Product Info

| | |
|----------------------------|---|
| Amount : | 25 µg / 100 µg |
| Purification : | Protein A Chromatography |
| Content : | 0.2 mg/ml in Tris buffer containing 0.05% Azide |
| Storage condition : | Store the antibody at 4°C, stable for 6 months. |

Application Note

FACS: 0.5-1 µg/10⁶

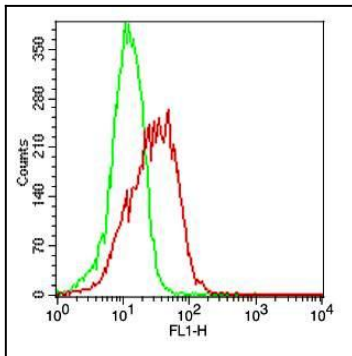


Fig-1: Cell surface flow analysis of FITC conjugated Rabbit recombinant hPD-1 antibody in PHA treated PBMC (Lymphocyte gated) using 0.5 $\mu\text{g}/10^6$ cells of FITC conjugated Rabbit recombinant hPD-1 antibody (Clone: ABMRR01). Green represent unstimulated and red represent stimulated PBMC.