

10-6625: Mouse Monoclonal Antibody to GPR56 (Clone: 1443CT377.65.29)(Discontinued)

Clonality :	monoclonal
Clone Name :	1443CT377.65.29
Application :	IF, WB
Reactivity :	Human
Gene :	GPR56
Gene ID :	9289
Uniprot ID :	Q9Y653
Format :	Purified
Alternative Name :	G-protein coupled receptor 56, Protein TM7XN1, GPR56 N-terminal fragment, GPR56 NT, GPR56(N), GPR56 extracellular subunit, GPR56 subunit alpha, GPR56 C-terminal fragment, GPR56 CT, GPR56(C), GPR56 seven-transmembrane subunit, GPR56 7TM, GPR56 subunit beta, GPR56, TM7LN4, TM7XN1
Isotype :	Mouse IgG1, Kappa

Description

Involved in cell adhesion and probably in cell-cell interactions. Regulates the migration of neural precursor cells. Receptor for collagen III/COL3A1 in the developing brain and involved in regulation of cortical development, specifically in maintenance of the pial basement membrane integrity and in cortical lamination. Binding to the COL3A1 ligand inhibits neuronal migration and activates the RhoA pathway by coupling to GNA13 and possibly GNA12. Isoforms show differences in receptor signaling, specifically in serum response element (SRE) transcriptional activation upon overexpression. Overexpression inhibits melanoma tumor growth and metastasis and, during melanoma progression, regulates VEGFA production and angiogenesis through PRKCA; unprocessed GPR56 is inhibiting and GPR56 NT is activating angiogenesis.

Product Info

Amount :	80 µl / 400 µl
Purification :	Protein G Chromatography
Content :	Purified monoclonal antibody supplied in PBS with 0.09% (W/V) sodium azide.
Storage condition :	Maintain refrigerated at 2-8°C for up to 2 weeks. For long term store at -20°C in small aliquots to prevent freeze-thaw cycles.

Application Note

IF~1:25|| WB~1:1000~2000|| WB

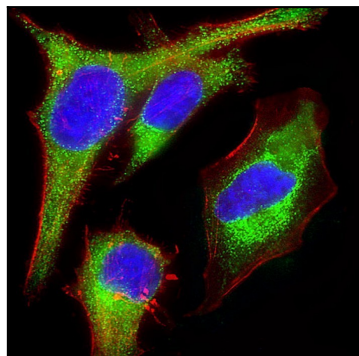


Figure 1: Immunofluorescent analysis of 4% paraformaldehyde-fixed HeLa (human cervical epithelial adenocarcinoma cell line) cells labeling Pdx1 with GPR56 antibody (10-6625) at 1/25 dilution, followed by Dylight® 488-conjugated goat anti-rabbit IgG secondary antibody at 1/200 dilution (green). Immunofluorescence image showing Cytoplasm staining on HeLa cell line. Cytoplasmic actin is detected with Dylight® 554 Phalloidin at 1/100 dilution (red). The nuclear counter stain is DAPI (blue).

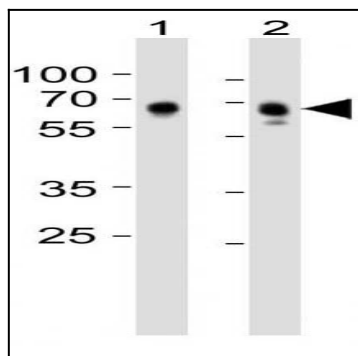


Figure 2: All lanes : Anti-GPR56 Antibody (10-6625) at 1:1000 dilution with Lane 1: HeLa whole cell lysates, Lane 2: U87-MG whole cell lysates/proteins at 20 µg per lane. Secondary Goat Anti-mouse IgG, (H+L), Peroxidase conjugated at 1/10000 dilution Predicted band size : 78 kDa.

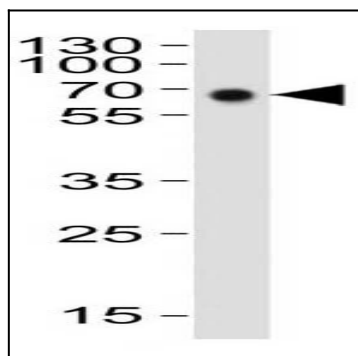


Figure 3: Western blot analysis of GPR56 antibody (10-6625) in HeLa cell line. GPR56 antibody was diluted at 1:2000. A goat anti-mouse IgG H&L(HRP) at 1:10000 dilution was used as the secondary antibody. Lysate at 20 µg.

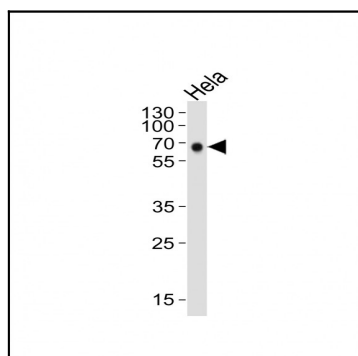


Figure 4: Western blot analysis of lysate from HeLa cell line, using GPR56 (10-6625) antibody. GPR56 Antibody (10-6625) antibody was diluted at 1:2000. A goat anti-mouse IgG H&L (HRP) at 1:10000 dilution was used as the secondary antibody. Lysate at 20 µg.