

## 10-6615: Mouse Monoclonal Antibody to Stat3 (Clone: 1200CT146.104.153)(Discontinued)

<b>Clonality :</b>	Monoclonal
<b>Clone Name :</b>	1200CT146.104.153
<b>Application :</b>	WB
<b>Reactivity :</b>	Human
<b>Gene :</b>	STAT3
<b>Gene ID :</b>	6774
<b>Uniprot ID :</b>	P40763
<b>Format :</b>	Purified
<b>Alternative Name :</b>	Signal transducer and activator of transcription 3, Acute-phase response factor, STAT3, APRF
<b>Isotype :</b>	Mouse IgG2a,Kappa
<b>Immunogen Information :</b>	Recombinant Protein

### Description

Signal transducer and transcription activator that mediates cellular responses to interleukins, KITLG/SCF and other growth factors. May mediate cellular responses to activated FGFR1, FGFR2, FGFR3 and FGFR4. Binds to the interleukin-6 (IL-6)-responsive elements identified in the promoters of various acute-phase protein genes. Activated by IL31 through IL31RA. Cytoplasmic STAT3 represses macroautophagy by inhibiting EIF2AK2/PKR activity. Plays an important role in host defense in methicillin-resistant S.aureus lung infection by regulating the expression of the antimicrobial lectin REG3G (By similarity).

### Product Info

<b>Amount :</b>	80 µl / 400 µl
<b>Purification :</b>	Protein G Chromatography
<b>Content :</b>	Purified monoclonal antibody supplied in PBS with 0.09% (W/V) sodium azide.
<b>Storage condition :</b>	Maintain refrigerated at 2-8°C for up to 2 weeks. For long term store at -20°C in small aliquots to prevent freeze-thaw cycles.

### Application Note

WB~1:1000

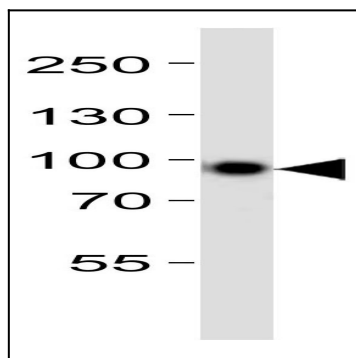


Figure 1: Western blot analysis of lysate from HeLa cell line, using Stat3 Antibody (10-6615). Stat3 Antibody was diluted at 1:1000. A goat anti-mouse IgG H&L (HRP) at 1:3000 dilution was used as the secondary antibody. Lysate at 35 µg.