

10-6606: Mouse Monoclonal Antibody to KLF4 (Clone: 56CT5.1.6)(Discontinued)

Clonality :	Monoclonal
Clone Name :	56CT5.1.6
Application :	WB,IF,FACS
Reactivity :	Human
Gene :	KLF4
Gene ID :	9314
Uniprot ID :	O43474
Format :	Purified
Alternative Name :	Kruppel-like factor 4, Epithelial zinc finger protein EZF, Gut-enriched krueppel-like factor, KLF4, EZF, GKLF
Isotype :	Mouse IgG2b,Kappa
Immunogen Information :	Recombinant Protein

Product Info

Amount :	80 μ l / 400 μ l
Purification :	Protein G Chromatography
Content :	Purified monoclonal antibody supplied in PBS with 0.09% (W/V) sodium azide.
Storage condition :	Maintain refrigerated at 2-8°C for up to 2 weeks. For long term store at -20°C in small aliquots to prevent freeze-thaw cycles.

Application Note

WB~1:2000~8000|| FACS~1:10~50|| IF~1:10~50

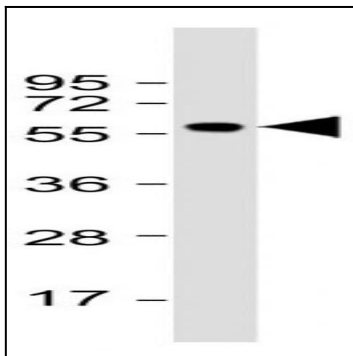


Figure 1: Anti-KLF4 Antibody (10-6606) at 1:8000 dilution + Recombinant protein Lysates/proteins at 20 μ g per lane. Secondary Goat Anti-mouse IgG, (H+L), Peroxidase conjugated at 1/10000 dilution. Predicted band size : 55 kDa.

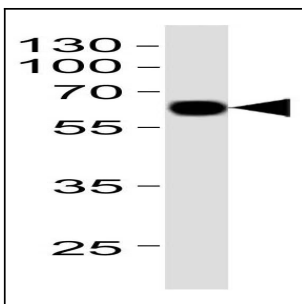


Figure 2: Western blot analysis of lysates with KLF4 protein, using KLF4 Antibody (10-6606). KLF4 Antibody was diluted at 1:1000 at each lane. A goat anti-mouse IgG H&L (HRP) at 1:10000 dilution was used as the secondary antibody. Lysate at 20 μ g.

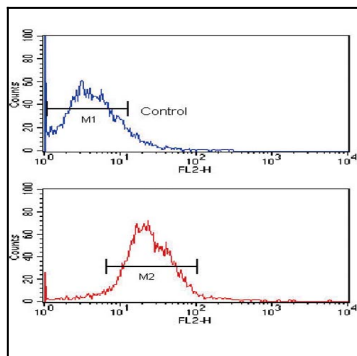


Figure 3: Flow cytometric analysis of MCF-7 cells using KLF4 Monoclonal Antibody (bottom histogram) compared to a negative control cell (top histogram). PE-conjugated goat-anti-mouse secondary antibodies were used for the analysis.

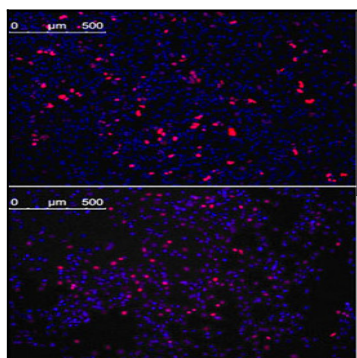


Figure 4: Immunofluorescence analysis of KLF4 antibody (10-6606) with 5 μ g/ml. HeLa cells transfected with pMX constructs of human KLF4 (top) and NIH3T3 cells transfected with pMX constructs of mouse KLF4 (bottom) were analyzed at approximately 62 hours after transfection.