

10-6589: Mouse Monoclonal Antibody to DRD4 (Center)(Clone: 625CT1.5.4)(Discontinued)

Clonality :	Monoclonal
Clone Name :	625CT1.5.4
Application :	WB
Reactivity :	Human,Mouse
Gene :	DRD4
Gene ID :	1815
Uniprot ID :	P21917
Format :	Purified
Alternative Name :	D(4) dopamine receptor, D(2C) dopamine receptor, Dopamine D4 receptor, DRD4
Isotype :	Mouse IgG1
Immunogen Information :	Synthetic Peptide

Description

This gene encodes the D4 subtype of the dopamine receptor. The D4 subtype is a G-protein coupled receptor which inhibits adenylyl cyclase. It is a target for drugs which treat schizophrenia and Parkinson disease. Mutations in this gene have been associated with various behavioral phenotypes, including autonomic nervous system dysfunction, attention deficit/hyperactivity disorder, and the personality trait of novelty seeking. This gene contains a polymorphic number (2-10 copies) of tandem 48 nt repeats; the sequence shown contains four repeats.

Product Info

Amount :	80 μ l / 400 μ l
Purification :	Protein G Chromatography
Content :	Purified monoclonal antibody supplied in PBS with 0.09% (W/V) sodium azide.
Storage condition :	Maintain refrigerated at 2-8°C for up to 2 weeks. For long term store at -20°C in small aliquots to prevent freeze-thaw cycles.

Application Note

WB~1:100~250

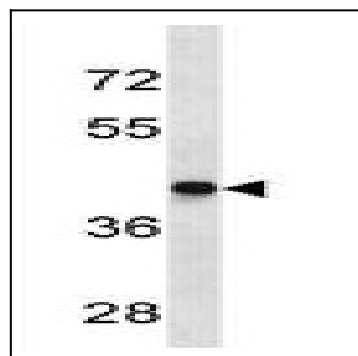


Figure 1: Western blot analysis of DRD4 Antibody (10-6589) in mouse heart tissue lysates (35 μ g/lane). This demonstrates the DRD4 antibody detected the DRD4 protein.