

10-6588: Mouse Monoclonal Antibody to LOX (Center)(Clone: 624CT23.7.3)(Discontinued)

Clonality :	Monoclonal
Clone Name :	624CT23.7.3
Application :	WB
Reactivity :	Human
Gene :	LOX
Gene ID :	4015
Uniprot ID :	P28300
Format :	Purified
Alternative Name :	Protein-lysine 6-oxidase, Lysyl oxidase, LOX
Isotype :	Mouse IgG2b
Immunogen Information :	Synthetic Peptide

Description

The protein encoded by this gene is an extracellular copper enzyme that initiates the crosslinking of collagens and elastin. The enzyme catalyzes oxidative deamination of the epsilon-amino group in certain lysine and hydroxylysine residues of collagens and lysine residues of elastin. In addition to crosslinking extracellular matrix proteins, the encoded protein may have a role in tumor suppression. Defects in this gene are a cause of autosomal recessive cutis laxa type I (CL type I). Two transcript variants encoding different isoforms have been found for this gene.

Product Info

Amount :	80 µl / 400 µl
Purification :	Protein G Chromatography
Content :	Purified monoclonal antibody supplied in PBS with 0.09% (W/V) sodium azide.
Storage condition :	Maintain refrigerated at 2-8°C for up to 2 weeks. For long term store at -20°C in small aliquots to prevent freeze-thaw cycles.

Application Note

WB~1:100~500

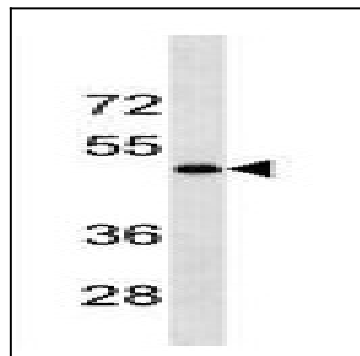


Figure 1: Western blot analysis of LOX Antibody (10-6588) in MDA-MB231 cell line lysates (35 $\frac{1}{4}$ g/lane). This demonstrates the LOX antibody detected the LOX protein.