

10-6587: Mouse Monoclonal Antibody to CREB1 (Clone: 1335CT115.203.189)(Discontinued)

Clonality :	Monoclonal
Clone Name :	1335CT115.203.189
Application :	WB
Reactivity :	Human,Mouse,Rat
Gene :	CREB1
Gene ID :	1385
Uniprot ID :	P16220
Format :	Purified
Alternative Name :	Cyclic AMP-responsive element-binding protein 1, CREB-1, cAMP-responsive element-binding protein 1, CREB1
Isotype :	Mouse IgG1,Kappa
Immunogen Information :	Recombinant Protein

Description

Phosphorylation-dependent transcription factor that stimulates transcription upon binding to the DNA cAMP response element (CRE), a sequence present in many viral and cellular promoters. Transcription activation is enhanced by the TORC coactivators which act independently of Ser-133 phosphorylation. Involved in different cellular processes including the synchronization of circadian rhythmicity and the differentiation of adipose cells.

Product Info

Amount :	80 µl / 400 µl
Purification :	Protein G Chromatography
Content :	Purified monoclonal antibody supplied in PBS with 0.09% (W/V) sodium azide.
Storage condition :	Maintain refrigerated at 2-8°C for up to 2 weeks. For long term store at -20°C in small aliquots to prevent freeze-thaw cycles.

Application Note

WB~1:1000

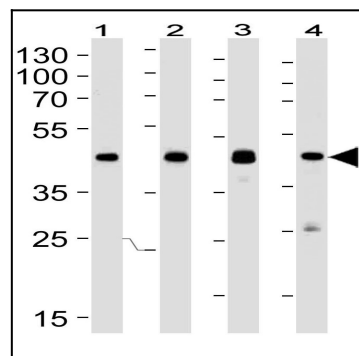


Figure 1: Western blot analysis of CREB1 Antibody (10-6587) lysates with Lane 1:A549, Lane 2: mouse Neuro-2a, Lane 3: mouse NIH/3T3, and Lane 4: rat C6 cell line. CREB1 Antibody was diluted at 1:1000 at each lane. A goat anti-mouse IgG H&L (HRP) at 1:3000 dilution was used as the secondary antibody. Lysates at 35 $\frac{1}{4}$ g per lane.