

## 10-6579: Mouse Monoclonal Antibody to IGF2 (Clone: 519CT14.3.6)(Discontinued)

<b>Clonality :</b>	Monoclonal
<b>Clone Name :</b>	519CT14.3.6
<b>Application :</b>	WB
<b>Reactivity :</b>	Human
<b>Gene :</b>	IGF2
<b>Gene ID :</b>	3481
<b>Uniprot ID :</b>	P01344
<b>Format :</b>	Purified
<b>Alternative Name :</b>	Insulin-like growth factor II, IGF-II, Somatomedin-A, Insulin-like growth factor II, Insulin-like growth factor II Ala-25 Del, Preptin, IGF2
<b>Isotype :</b>	Mouse IgM
<b>Immunogen Information :</b>	Synthetic Peptide

### Description

This gene encodes a member of the insulin family of polypeptide growth factors, which are involved in development and growth. It is an imprinted gene, expressed only from the paternal allele, and epigenetic changes at this locus are associated with Wilms tumour, Beckwith-Wiedemann syndrome, rhabdomyosarcoma, and Silver-Russell syndrome. A read-through INS-IGF2 gene exists, whose 5' region overlaps the INS gene and the 3' region overlaps this gene. Alternatively spliced transcript variants encoding different isoforms have been found for this gene.

### Product Info

<b>Amount :</b>	80 µl / 400 µl
<b>Content :</b>	Purified monoclonal antibody supplied in PBS with 0.09% (W/V) sodium azide. This antibody is prepared by Euglobin precipitation followed by dialysis against PBS.
<b>Storage condition :</b>	Maintain refrigerated at 2-8°C for up to 2 weeks. For long term store at -20°C in small aliquots to prevent freeze-thaw cycles.

### Application Note

WB~1:100~500

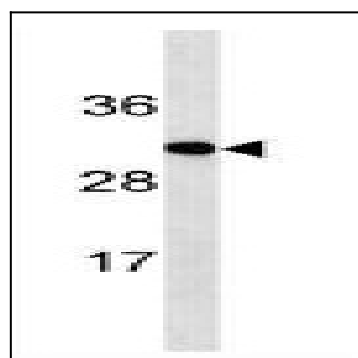


Figure 1: Western blot analysis of IGF2 Antibody (10-6579) in A549 cell line lysates (35 µg/lane). This demonstrates the IGF2 antibody detected the IGF2 protein.