

10-6578: Mouse Monoclonal Antibody to ALB (Clone: 500CT2.1.4)(Discontinued)

Clonality :	Monoclonal
Clone Name :	500CT2.1.4
Application :	WB
Reactivity :	Human
Gene :	ALB
Gene ID :	213
Uniprot ID :	P02768
Format :	Purified
Alternative Name :	Serum albumin, ALB
Isotype :	Mouse IgG2a
Immunogen Information :	Synthetic Peptide

Description

Albumin is a soluble, monomeric protein which comprises about one-half of the blood serum protein. Albumin functions primarily as a carrier protein for steroids, fatty acids, and thyroid hormones and plays a role in stabilizing extracellular fluid volume. Albumin is a globular unglycosylated serum protein of molecular weight 65,000. Albumin is synthesized in the liver as preproalbumin which has an N-terminal peptide that is removed before the nascent protein is released from the rough endoplasmic reticulum. The product, proalbumin, is in turn cleaved in the Golgi vesicles to produce the secreted albumin.

Product Info

Amount :	80 µl / 400 µl
Purification :	Protein G Chromatography
Content :	Purified monoclonal antibody supplied in PBS with 0.09% (W/V) sodium azide.
Storage condition :	Maintain refrigerated at 2-8°C for up to 2 weeks. For long term store at -20°C in small aliquots to prevent freeze-thaw cycles.

Application Note

WB~1:100~500

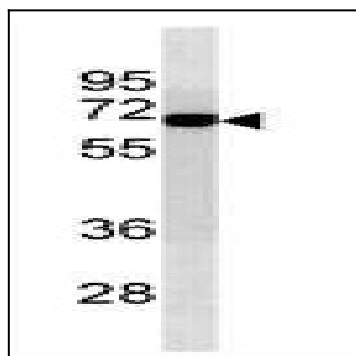


Figure 1: Western blot analysis of ALB Antibody (10-6578) in T47D cell line lysates (35 µg/lane). This demonstrates the ALB antibody detected the ALB protein.