

10-6573: Mouse Monoclonal Antibody to Myoglobin (Clone: 444CT19.2.1)(Discontinued)

Clonality :	Monoclonal
Clone Name :	444CT19.2.1
Application :	WB
Reactivity :	Human,Mouse
Gene :	MB
Gene ID :	4151
Uniprot ID :	P02144
Format :	Purified
Alternative Name :	Myoglobin, MB
Isotype :	Mouse IgG1
Immunogen Information :	Synthetic Peptide

Description

This gene encodes a member of the globin superfamily and is expressed in skeletal and cardiac muscles. The encoded protein is a haemoprotein contributing to intracellular oxygen storage and transcellular facilitated diffusion of oxygen. At least three alternatively spliced transcript variants encoding the same protein have been reported.

Product Info

Amount :	80 µl / 400 µl
Purification :	Protein G Chromatography
Content :	Purified monoclonal antibody supplied in PBS with 0.09% (W/V) sodium azide.
Storage condition :	Maintain refrigerated at 2-8°C for up to 2 weeks. For long term store at -20°C in small aliquots to prevent freeze-thaw cycles.

Application Note

WB~1:1000

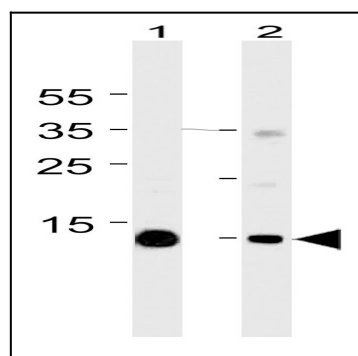


Figure 1: Western blot analysis of Myoglobin Antibody (10-6573) with Lane 1: mouse heart and Lane 2: skeletal muscle tissue lysates (35µg/lane). This demonstrates the Myoglobin antibody detected the Myoglobin protein.