

10-6567: Mouse Monoclonal Antibody to UCHL1 (Clone: 346CT2.2.1)(Discontinued)

Clonality :	Monoclonal
Clone Name :	346CT2.2.1
Application :	WB,IF,IHC-P
Reactivity :	Human
Gene :	UCHL1
Gene ID :	7345
Uniprot ID :	P09936
Format :	Purified
Alternative Name :	Ubiquitin carboxyl-terminal hydrolase isozyme L1, UCH-L1, 6---, Neuron cytoplasmic protein 95, PGP 95, PGP95, Ubiquitin thioesterase L1, UCHL1
Isotype :	Mouse IgG1,Kappa
Immunogen Information :	Recombinant Protein

Description

The protein encoded by this gene belongs to the peptidase C12 family. This enzyme is a thiol protease that hydrolyzes a peptide bond at the C-terminal glycine of ubiquitin. This gene is specifically expressed in the neurons and in cells of the diffuse neuroendocrine system. Mutations in this gene may be associated with Parkinson disease.

Product Info

Amount :	80 µl / 400 µl
Purification :	Protein G Chromatography
Content :	Purified monoclonal antibody supplied in PBS with 0.09% (W/V) sodium azide.
Storage condition :	Maintain refrigerated at 2-8°C for up to 2 weeks. For long term store at -20°C in small aliquots to prevent freeze-thaw cycles.

Application Note

IHC-P~1:25|| IF~1:25|| WB~1:120~1000

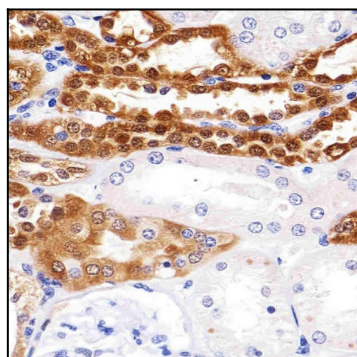


Figure 1: Immunohistochemical analysis of paraffin-embedded h kidney section using UCHL1 antibody (10-6567). UCHL1 antibody was diluted at 1:25 dilution. A undiluted biotinylated goat polyvalent antibody was used as the secondary, followed by DAB staining.

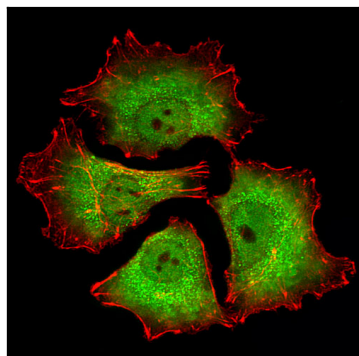


Figure 2: Fluorescent image of A549 cells stained with UCHL1 Antibody (10-6567). UCHL1 antibody was diluted at 1:25 dilution. An Alexa Fluor® 488-conjugated goat anti-mouse IgG at 1:400 dilution was used as the secondary antibody (green). Cytoplasmic actin was counterstained with Alexa Fluor® 555 conjugated with Phalloidin (red).

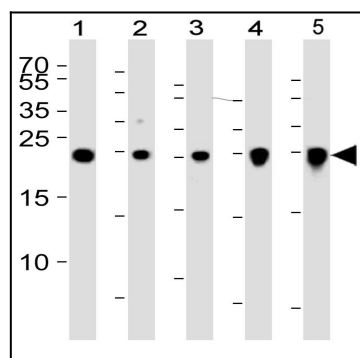


Figure 3: Western blot analysis of lysates with lane 1: U266, lane 2: mouse Neuro-2a, lane 3: rat PC-12, lane 4: C6 cell line and lane 5: mouse brain tissue lysate using UCHL1 Antibody (10-6567). UCHL1 Antibody was diluted at 1:1000 at each lane. A goat anti-mouse IgG H&L (HRP) at 1:3000 dilution was used as the secondary antibody. Lysates at 35 μ g per lane.

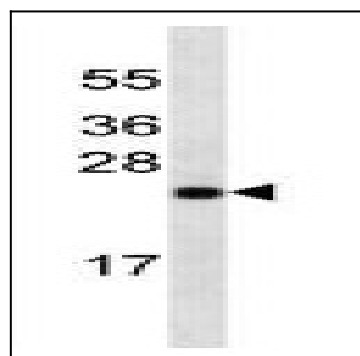


Figure 4: Western blot analysis UCHL1 Antibody (10-6567) in NCI-H460 cell line lysates (35 μ g/lane). This demonstrates the UCHL1 antibody detected the UCHL1 protein.