

## 10-6565: Mouse Monoclonal Antibody to MME/CD10 (Clone: 307CT12.12.5)(Discontinued)

<b>Clonality :</b>	Monoclonal
<b>Clone Name :</b>	307CT12.12.5
<b>Application :</b>	WB
<b>Reactivity :</b>	Human
<b>Gene :</b>	MME
<b>Gene ID :</b>	4311
<b>Uniprot ID :</b>	P08473
<b>Format :</b>	Purified
<b>Alternative Name :</b>	Nepriylsin, Atriopeptidase, Common acute lymphocytic leukemia antigen, CALLA, Enkephalinase, Neutral endopeptidase 2411, NEP, Neutral endopeptidase, Skin fibroblast elastase, SFE, CD10, MME, EPN
<b>Isotype :</b>	Mouse IgM,Kappa
<b>Immunogen Information :</b>	Synthetic Peptide

### Description

This gene encodes a common acute lymphocytic leukemia antigen that is an important cell surface marker in the diagnosis of human acute lymphocytic leukemia (ALL). This protein is present on leukemic cells of pre-B phenotype, which represent 85% of cases of ALL. This protein is not restricted to leukemic cells, however, and is found on a variety of normal tissues. It is a glycoprotein that is particularly abundant in kidney, where it is present on the brush border of proximal tubules and on glomerular epithelium. The protein is a neutral endopeptidase that cleaves peptides at the amino side of hydrophobic residues and inactivates several peptide hormones including glucagon, enkephalins, substance P, neurotensin, oxytocin, and bradykinin. This gene, which encodes a 100-kD type II transmembrane glycoprotein, exists in a single copy of greater than 45 kb. The 5' untranslated region of this gene is alternatively spliced, resulting in four separate mRNA transcripts. The coding region is not affected by alternative splicing. [provided by RefSeq].

### Product Info

<b>Amount :</b>	80 µl / 400 µl
<b>Content :</b>	Purified monoclonal antibody supplied in PBS with 0.09% (W/V) sodium azide. This antibody is prepared by Euglobin precipitation followed by dialysis against PBS.
<b>Storage condition :</b>	Maintain refrigerated at 2-8°C for up to 2 weeks. For long term store at -20°C in small aliquots to prevent freeze-thaw cycles.

### Application Note

WB~1:100~250

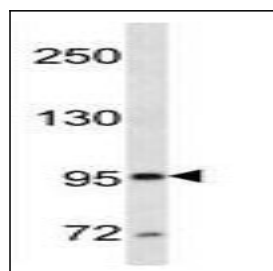


Figure 1: Western blot analysis of MME/CD10 (10-6565) in CEM cell line lysates (35µg/lane). This demonstrates the MME/CD10 antibody detected the MME/CD10 protein.