

10-6558: Mouse Monoclonal Antibody to C-rel (Clone: 318CT41.3.2)(Discontinued)

Clonality :	Monoclonal
Clone Name :	318CT41.3.2
Application :	WB
Reactivity :	Human
Gene :	REL
Gene ID :	5966
Uniprot ID :	Q04864
Format :	Purified
Alternative Name :	Proto-oncogene c-Rel, REL
Isotype :	Mouse IgG2b,Kappa
Immunogen Information :	Recombinant Protein

Description

The REL gene encodes c-Rel, a transcription factor that is a member of the Rel/NF κ B family, which also includes RELA (MIM164014), RELB (604758), NF κ B1 (MIM 164011), and NF κ B2 (MIM 164012). These proteins are related through a highly conserved N-terminal region termed the 'Rel domain,' which is responsible for DNA binding, dimerization, nuclear localization, and binding to the NF κ B inhibitor (MIM 164008).

Product Info

Amount :	80 μ l / 400 μ l
Purification :	Protein G Chromatography
Content :	Purified monoclonal antibody supplied in PBS with 0.09% (W/V) sodium azide.
Storage condition :	Maintain refrigerated at 2-8°C for up to 2 weeks. For long term store at -20°C in small aliquots to prevent freeze-thaw cycles.

Application Note

WB~1:120~1000

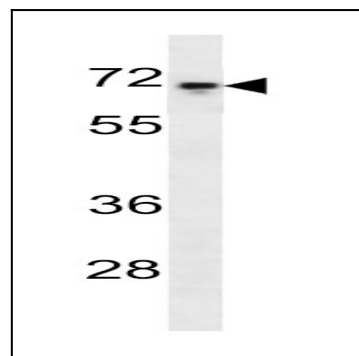


Figure 1: Western blot analysis of C-rel Antibody (10-6558) in HeLa cell line lysates (35 μ g/lane). This demonstrates the C-rel antibody detected the C-rel protein.