

10-6557: Mouse Monoclonal Antibody to CDC25C (Clone: 233CT9.6.6)(Discontinued)

Clonality :	Monoclonal
Clone Name :	233CT9.6.6
Application :	WB
Reactivity :	Human
Gene :	CDC25C
Gene ID :	995
Uniprot ID :	P30307
Format :	Purified
Alternative Name :	M-phase inducer phosphatase 3, Dual specificity phosphatase Cdc25C, CDC25C
Isotype :	Mouse IgG1,Kappa
Immunogen Information :	Recombinant Protein

Description

This gene is highly conserved during evolution and it plays a key role in the regulation of cell division. The encoded protein is a tyrosine phosphatase and belongs to the Cdc25 phosphatase family. It directs dephosphorylation of cyclin B-bound CDC2 and triggers entry into mitosis. It is also thought to suppress p53-induced growth arrest. Multiple alternatively spliced transcript variants of this gene have been described, however, the full-length nature of many of them is not known. [provided by RefSeq].

Product Info

Amount :	80 µl / 400 µl
Purification :	Protein G Chromatography
Content :	Purified monoclonal antibody supplied in PBS with 0.09% (W/V) sodium azide.
Storage condition :	Maintain refrigerated at 2-8°C for up to 2 weeks. For long term store at -20°C in small aliquots to prevent freeze-thaw cycles.

Application Note

WB~1:100

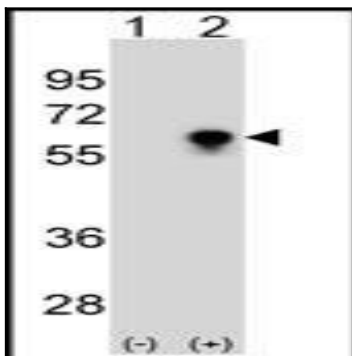


Figure 1: Western blot analysis of CDC25C Antibody (10-6557) with Lane 1: 293 cell lysates (2 1/4g/lane) either nontransfected or Lane 2: transiently transfected with the CDC25C gene.