

10-6554: Mouse Monoclonal Antibody to CD25 (Clone: 7G7B6)(Discontinued)

Clonality :	Monoclonal
Clone Name :	7G7B6
Application :	WB
Reactivity :	Human
Gene :	IL2RA
Gene ID :	3559
Uniprot ID :	P01589
Format :	Ascites
Alternative Name :	Interleukin-2 receptor subunit alpha, IL-2 receptor subunit alpha, IL-2-RA, IL-2R subunit alpha, IL2-RA, TAC antigen, p55, CD25, IL2RA
Isotype :	Mouse IgG2a

Description

The interleukin 2 (IL2) receptor alpha (IL2RA) and beta (IL2RB) chains, together with the common gamma chain (IL2RG), constitute the high-affinity IL2 receptor. Homodimeric alpha chains (IL2RA) result in low-affinity receptor, while homodimeric beta (IL2RB) chains produce a medium-affinity receptor. Normally an integral-membrane protein, soluble IL2RA has been isolated and determined to result from extracellular proteolysis. Alternately-spliced IL2RA mRNAs have been isolated, but the significance of each is presently unknown. Mutations in this gene are associated with interleukin 2 receptor alpha deficiency.

Product Info

Amount :	0.1 ml
Content :	Mouse monoclonal antibody supplied in crude ascites with 0.09% (W/V) sodium azide.
Storage condition :	Maintain refrigerated at 2-8°C for up to 2 weeks. For long term store at -20°C in small aliquots to prevent freeze-thaw cycles.

Application Note

WB~1:100~800

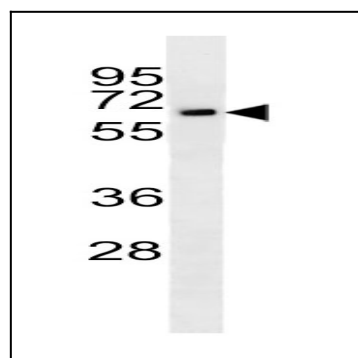


Figure 1: Western blot analysis of CD25 Antibody (10-6554) in Jurkat cell line lysates (35µg/lane). This demonstrates the CD25 antibody detected the CD25 protein.