

## 10-6550: Mouse Monoclonal Antibody to VEGFC (Clone: 197CT7.3.4)(Discontinued)

<b>Clonality :</b>	Monoclonal
<b>Clone Name :</b>	197CT7.3.4
<b>Application :</b>	WB
<b>Reactivity :</b>	Rat,Mouse,Human
<b>Gene :</b>	VEGFC
<b>Gene ID :</b>	7424
<b>Uniprot ID :</b>	P49767
<b>Format :</b>	Purified
<b>Alternative Name :</b>	Vascular endothelial growth factor C, VEGF-C, Flt4 ligand, Flt4-L, Vascular endothelial growth factor-related protein, VRP, VEGFC
<b>Isotype :</b>	Mouse IgG1,Kappa
<b>Immunogen Information :</b>	Recombinant Protein

### Description

The protein encoded by this gene is a member of the platelet-derived growth factor/vascular endothelial growth factor (PDGF/VEGF) family, is active in angiogenesis and endothelial cell growth, and can also affect the permeability of blood vessels. This secreted protein undergoes a complex proteolytic maturation, generating multiple processed forms which bind and activate VEGFR-3 receptors. Only the fully processed form can bind and activate VEGFR-2 receptors. This protein is structurally and functionally similar to vascular endothelial growth factor D. [provided by RefSeq].

### Product Info

<b>Amount :</b>	80 µl / 400 µl
<b>Purification :</b>	Protein G Chromatography
<b>Content :</b>	Purified monoclonal antibody supplied in PBS with 0.09% (W/V) sodium azide.
<b>Storage condition :</b>	Maintain refrigerated at 2-8°C for up to 2 weeks. For long term store at -20°C in small aliquots to prevent freeze-thaw cycles.

### Application Note

WB~1:1000-2000

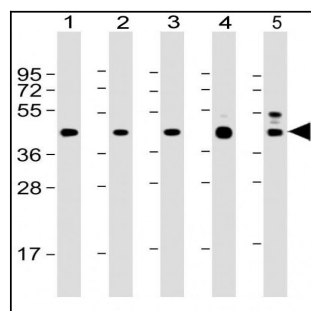


Figure 1: All lanes : Anti-VEGFC antibody (10-6550) at 1:2000 dilution with Lane 1: CCRF-CEM whole cell lysate, Lane 2: 293 whole cell lysate, Lane 3: HepG2 whole cell lysate, Lane 4: mouse heart lysate, Lane 5: rat heart lysates/proteins at 20 µg per lane. Secondary Goat Anti-mouse IgG (H+L), Peroxidase conjugated at 1/10000 dilution. Predicted band size : 47 kDa.

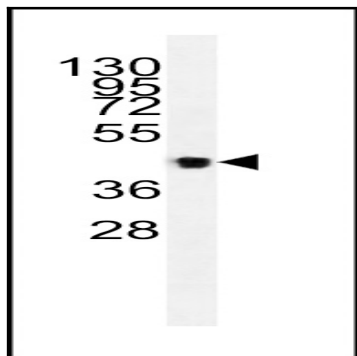


Figure 2: Western blot analysis of lysates from 293, CEM cell line and mouse heart, rat heart tissue lysates (from left to right), using VEGFC Antibody (10-6550 ). VEGFC Antibody (10-6550) was diluted at 1:1000 at each lane. A goat anti-mouse IgG H&L (HRP) at 1:3000 dilution was used as the secondary antibody. Lysates at 35  $\mu$ g per lane.