

10-6543: Mouse Monoclonal Antibody to MIPEP (Clone: 166CT22.3.7)(Discontinued)

Clonality :	Monoclonal
Clone Name :	166CT22.3.7
Application :	WB
Reactivity :	Human
Gene :	MIPEP
Gene ID :	4285
Uniprot ID :	Q99797
Format :	Purified
Alternative Name :	Mitochondrial intermediate peptidase, MIP, MIPEP, MIP
Isotype :	Mouse IgG1,Kappa
Immunogen Information :	Recombinant Protein

Description

Cleaves proteins, imported into the mitochondrion, to their mature size.

Product Info

Amount :	80 µl / 400 µl
Purification :	Protein G Chromatography
Content :	Purified monoclonal antibody supplied in PBS with 0.09% (W/V) sodium azide.
Storage condition :	Maintain refrigerated at 2-8°C for up to 2 weeks. For long term store at -20°C in small aliquots to prevent freeze-thaw cycles.

Application Note

WB~1:100~1000

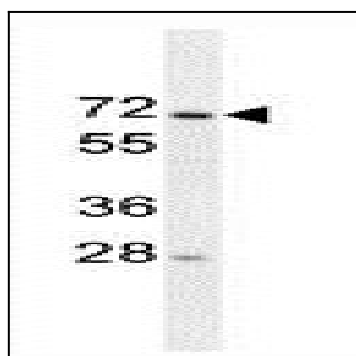


Figure 1: Western blot analysis of MIPEP Antibody (10-6543) in 293 cell line lysates (35 µg/lane). This demonstrates the MIPEP antibody detected the MIPEP protein.