

10-6542: Mouse Monoclonal Antibody to MCFD2 (Clone: 165CT13.1.6)(Discontinued)

Clonality :	Monoclonal
Clone Name :	165CT13.1.6
Application :	WB
Reactivity :	Human
Gene :	MCFD2
Gene ID :	90411
Uniprot ID :	Q8NI22
Format :	Purified
Alternative Name :	Multiple coagulation factor deficiency protein 2, Neural stem cell-derived neuronal survival protein, MCFD2, SDNSF
Isotype :	Mouse IgG1,Kappa
Immunogen Information :	Recombinant Protein

Description

The MCFD2-LMAN1 complex forms a specific cargo receptor for the ER-to-Golgi transport of selected proteins. Plays a role in the secretion of coagulation factors.

Product Info

Amount :	80 µl / 400 µl
Purification :	Protein G Chromatography
Content :	Purified monoclonal antibody supplied in PBS with 0.09% (W/V) sodium azide.
Storage condition :	Maintain refrigerated at 2-8°C for up to 2 weeks. For long term store at -20°C in small aliquots to prevent freeze-thaw cycles.

Application Note

WB~1:100~1000

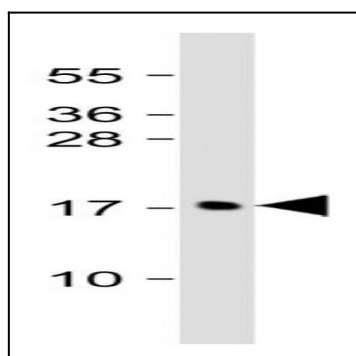


Figure 1: Anti-MCFD2 Antibody (10-6542) at 1:1000 dilution + 293T/17 whole cell lysates/proteins at 20 µg per lane. Secondary Goat Anti-mouse IgG (H+L), Peroxidase conjugated at 1/10000 dilution. Predicted band size : 16 kDa.

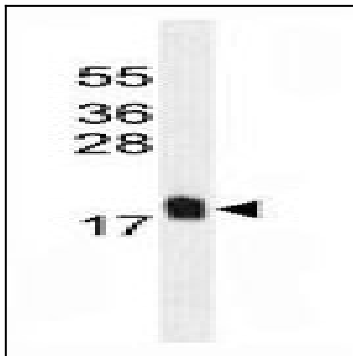


Figure 2: Western blot analysis of MCFD2 Antibody (10-6542) in U251 cell line lysates (35 $\frac{1}{4}$ g/lane). This demonstrates the MCFD2 antibody detected the MCFD2 protein.