

10-6541: Mouse Monoclonal Antibody to MAPK15 (Clone: 168CT10.6.6)(Discontinued)

Clonality :	Monoclonal
Clone Name :	168CT10.6.6
Application :	WB,IF
Reactivity :	Human
Gene :	MAPK15
Gene ID :	225689
Uniprot ID :	Q8TD08
Format :	Purified
Alternative Name :	Mitogen-activated protein kinase 15, MAP kinase 15, MAPK 15, Extracellular signal-regulated kinase 7, ERK-7, Extracellular signal-regulated kinase 8, ERK-8, MAPK15, ERK7, ERK8
Isotype :	Mouse IgG1,Kappa
Immunogen Information :	Recombinant Protein

Product Info

Amount :	80 µl / 400 µl
Purification :	Protein G Chromatography
Content :	Purified monoclonal antibody supplied in PBS with 0.09% (W/V) sodium azide.
Storage condition :	Maintain refrigerated at 2-8°C for up to 2 weeks. For long term store at -20°C in small aliquots to prevent freeze-thaw cycles.

Application Note

WB~1:100~500|| IF~1:10~50

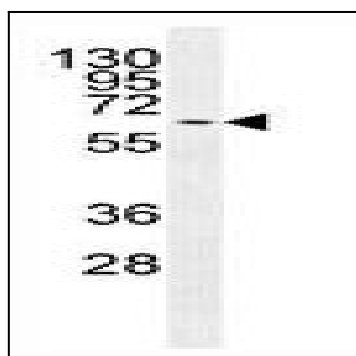


Figure 1: Western blot analysis of MAPK15 Antibody (10-6541) in MCF-7 cell line lysates (35 μ g/lane). This demonstrates the MAPK15 antibody detected the MAPK15 protein.

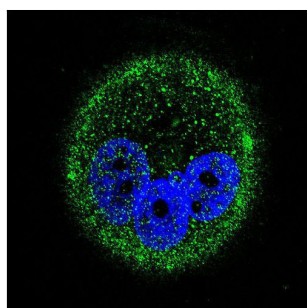


Figure 2: Confocal immunofluorescent analysis of MAPK15 Antibody (10-6541) with MCF-7 cell followed by Alexa Fluor® 488-conjugated goat anti-mouse IgG (green). DAPI was used to stain the cell nuclear (blue).