

## 10-6540: Mouse Monoclonal Antibody to LAMP2 (Clone: 157CT16.6.6)(Discontinued)

<b>Clonality :</b>	Monoclonal
<b>Clone Name :</b>	157CT16.6.6
<b>Application :</b>	WB,IF
<b>Reactivity :</b>	Mouse
<b>Gene :</b>	LAMP2
<b>Gene ID :</b>	3920
<b>Uniprot ID :</b>	P13473
<b>Format :</b>	Purified
<b>Alternative Name :</b>	Lysosome-associated membrane glycoprotein 2, LAMP-2, Lysosome-associated membrane protein 2, CD107 antigen-like family member B, CD107b, LAMP2
<b>Isotype :</b>	Mouse IgG1,Kappa
<b>Immunogen Information :</b>	Recombinant Protein

### Description

Implicated in tumor cell metastasis. May function in protection of the lysosomal membrane from autodigestion, maintenance of the acidic environment of the lysosome, adhesion when expressed on the cell surface (plasma membrane), and inter-and intracellular signal transduction. Protects cells from the toxic effects of methylating mutagens.

### Product Info

<b>Amount :</b>	80 µl / 400 µl
<b>Purification :</b>	Protein G Chromatography
<b>Content :</b>	Purified monoclonal antibody supplied in PBS with 0.09% (W/V) sodium azide.
<b>Storage condition :</b>	Maintain refrigerated at 2-8°C for up to 2 weeks. For long term store at -20°C in small aliquots to prevent freeze-thaw cycles.

### Application Note

WB~1:100~1000|| IF~1:10~50

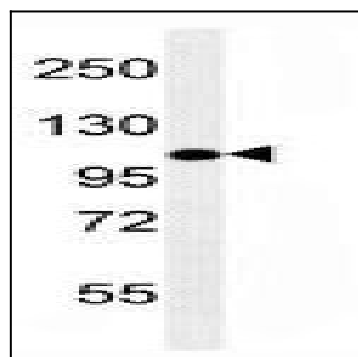


Figure 1: Western blot analysis of LAMP2 Antibody (10-6540) in mouse NIH-3T3 cell line lysates (35µg/lane). This demonstrates the LAMP2 antibody detected the LAMP2 protein.

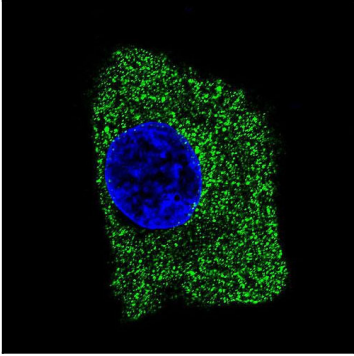


Figure 2: Confocal immunofluorescent analysis of LAMP2 Antibody (10-6540) with HepG2 cell followed by Alexa Fluor® 488-conjugated goat anti-mouse IgG (green). DAPI was used to stain the cell nuclear (blue).